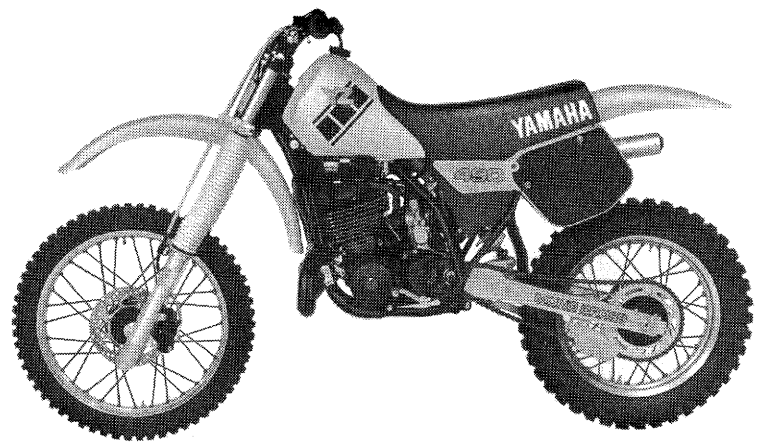


YAMAHA

PARTS CATALOGUE

YZ490N (57H)

1557H-664E1



FOREWORD

This Parts Catalogue is related to the parts in use for the Yamaha YZ490N (57H).
When you are ordering replacement parts for the YZ490N(57H), refer to this Parts Catalogue and quote both part numbers and part names correctly.

1. Modifications or additions which have been made after issue of the Parts Catalogue will be announced in the Yamaha Parts News.

It is advisable that according to the Yamaha Parts News you make necessary corrections to the Parts Catalogue on hand to keep it up-to-date.

2. Abbreviations

The following abbreviations are used in this Parts Catalogue.

- U.R. Use size (thickness) and/or number as required.
- U.N. Use as many as you need.
- A.P. Alternate Parts
- L.M. Local Made
- F# Frame No. (Applicable machine No.)

3. The parts marked with (*) in the parts number column of this Catalogue are not supplied with by Yamaha, those have to be found locally.

4. Parts, which are to be supplied in the form of assemblies, are listed with an indention of one letter's space, and a dot (.) is put against the name of each part.

EXAMPLE CARBURETOR ASS'Y
 . JET, pilot
 . NOZZLE, main

5. Indication of No. of constituent parts for assembly

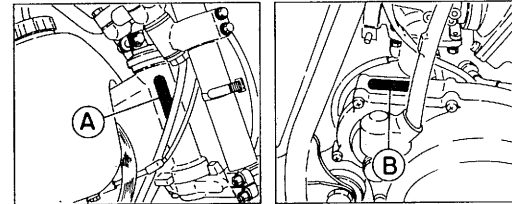
The numeral appearing to the right of each constituent part under the description indicates the quantity of such parts for each individual assembly unit.

EXAMPLE

Part No.	Description	Q'ty	Remarks
2F5-83310-60	FRONT FLASHER LIGHT ASS'Y	2	
115-83311-60	. BULB (6V-18W)	1	
1M1-83309-60	. REFLECTOR	1	

6. Initial Serial No. and Color Code

(A) Frame Serial No.	57H-000101 and following
(B) Engine Serial No.	57H-000101 and following



Color Code	Color Name	Abbreviate
36	Clean White	W

7. Applicable colors of graphics are represented in the "Remarks" column by the letter(s) appropriately picked out of the full word(s) showing such colors.

EXAMPLE

Part No.	Description	Q'ty	Remarks
2N4-24110-00-X5	FUEL TANK COMP.	1	MAXIM RED
3J1-24240-10	. GRAPHIC, fuel tank set	1	for MXR

CONTENTS

ENGINE

Cylinder	B2
Crankshaft · Piston	B3
Intake	B4 ~ B5
Carburetor	B6 ~ B7
Exhaust	B8
Crankcase	B9
Crankcase Cover 1	B10
Starter	B11
Clutch	B12
Transmission	B13 ~ B14
Shift Cam · Fork	B15
Shift Shaft	C2

CHASSIS

Frame	C3 ~ C4
Fender	C5
Side Cover	C6
Rear Arm	C7 ~ C8
Rear Suspension	C9 ~ C10
Steering	C11
Front Fork	C12 ~ C14
Fuel Tank	C15 ~ D2
Seat	D3
Front Wheel	D4
Front Brake · Caliper	D5
Rear Wheel	D6 ~ D7
Steering Handle · Cable	D8
Front Master Cylinder	D9
Stand · Footrest	D10

Generator	D11
Handle Switch · Lever	D12
Electrical 1	D13

ALTERNATE PARTS

Alternate (Chassis)	D14
---------------------------	-----

REPAIR KIT

Repair Kit	D15 ~ E2
------------------	----------

INDEX

Numerical Index	M1 ~ M3
-----------------------	---------

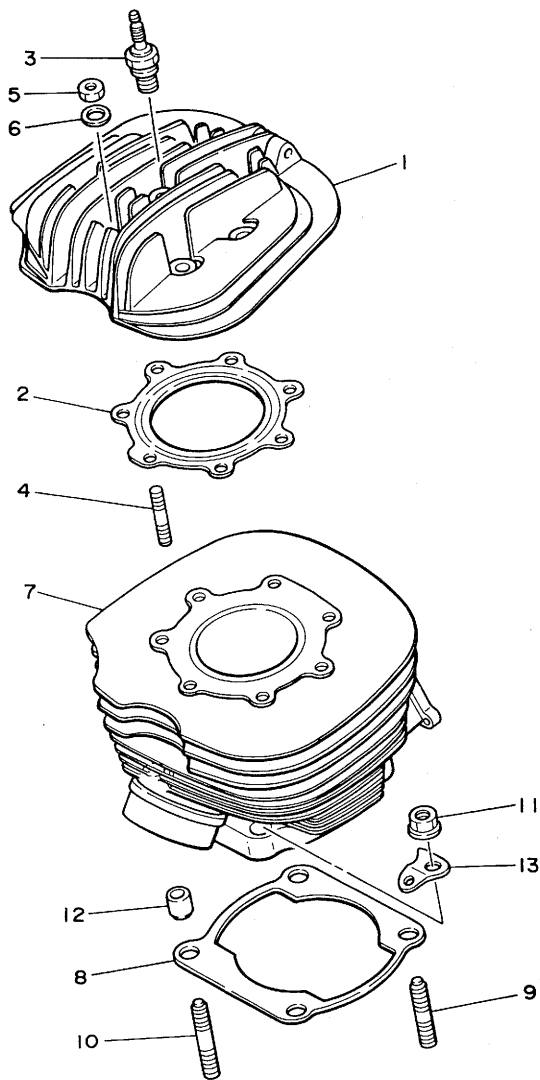


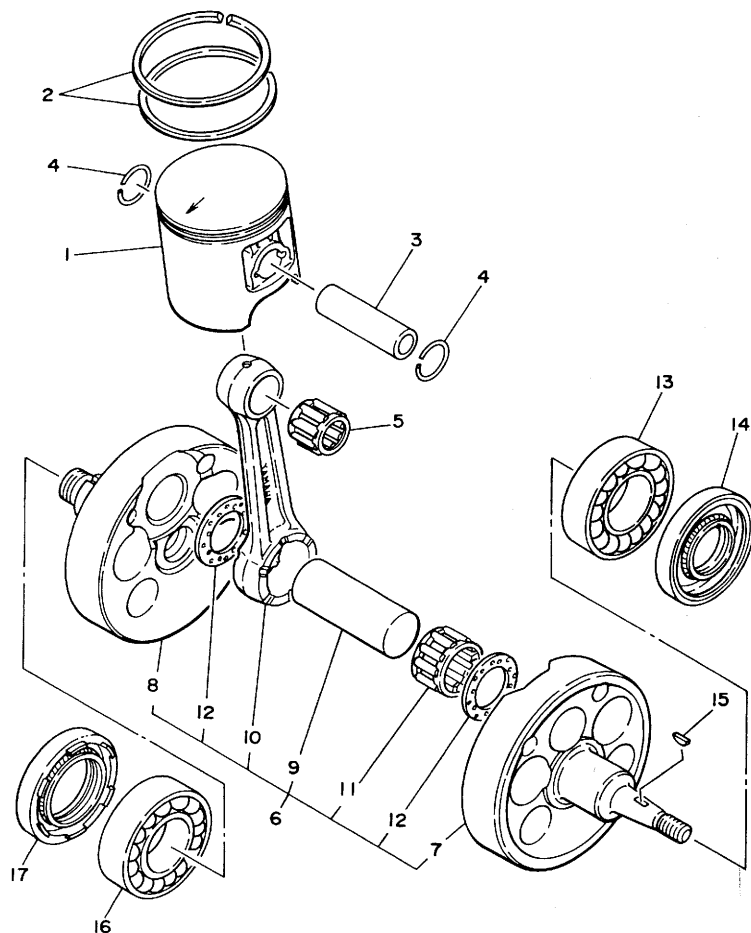
FIG. 1 CYLINDER

REF. NO.	PART NO.	DESCRIPTION	Q'TY	REMARKS
1	40T-11111-00	HEAD, cylinder 1	1	
2	40T-11181-00	GASKET, cylinder head 1	1	
3	*	PLUG, spark (CHAMPION QN86)	1	UR LM exclusive for S.Africa
	*	PLUG, spark (CHAMPION N86)	1	UR LM
4	90116-08394	BOLT, stud	7	
5	95301-08600	NUT	7	
6	90201-08649	WASHER, plate	7	
7	40T-11311-01	CYLINDER 1	1	
8	40T-11351-00	GASKET, cylinder	1	
9	90116-12315	BOLT, stud	2	
10	90116-12316	BOLT, stud	2	
11	95701-12100	NUT, flange	4	
12	91810-17016	PIN, dowel	2	
13	40T-14619-00	HOOK, spring	1	



40T100-4010

B2

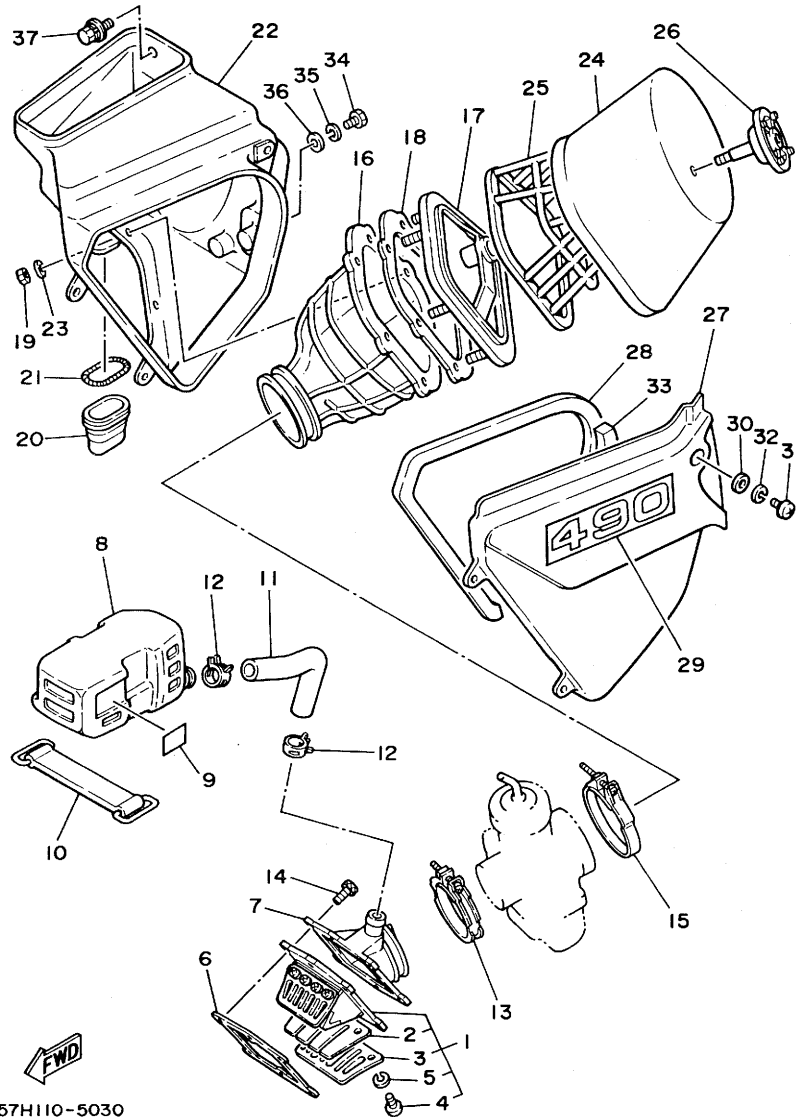


5X6100-2021

FIG. 2 CRANKSHAFT. PISTON

REF. NO.	PART NO.	DESCRIPTION	Q'TY	REMARKS
1	40T-11631-00-93	PISTON (STD)	1	
	40T-11631-00-94	PISTON (STD)	1	
	40T-11635-00	PISTON (0.25MM O/S)	1	AP
	40T-11636-00	PISTON (0.50MM O/S)	1	AP
	40T-11637-00	PISTON (0.75MM O/S)	1	AP
	40T-11638-00	PISTON (1.00MM O/S)	1	AP
2	5X6-11601-00	PISTON RING SET (STD)	1	
	5X6-11601-10	PISTON RING SET (1ST O/S)	1	AP
	5X6-11601-20	PISTON RING SET (2ND O/S)	1	AP
	5X6-11601-30	PISTON RING SET (3RD O/S)	1	AP
	5X6-11601-40	PISTON RING SET (4TH O/S)	1	AP
3	275-11633-00	PIN, piston	1	
4	93450-19052	CIRCLIP	2	
5	93310-418E9	BEARING, cylindrical	1	
6	40T-11400-00	CRANKSHAFT ASSY	1	
7	40T-11412-00	.CRANK 1	1	
8	40T-11422-00	.CRANK 2	1	
9	3R8-11681-00	.PIN, crank 1	1	
10	3R5-11651-00	.ROD, connecting	1	
11	93310-42541	.BEARING, cylindrical	1	
12	90209-25085	.WASHER	2	
13	93306-30615	BEARING (B6306)	1	
14	93103-30092	OIL SEAL	1	
15	90280-03017	KEY, woodruff	1	
16	93306-30615	BEARING (B6306)	1	
17	93103-40091	OIL SEAL	1	

B3



57H110-5030

FIG. 3 INTAKE

REF. NO.	PART NO.	DESCRIPTION	Q'TY	REMARKS
1	39X-13610-00	REED VALVE ASSY	1	
2	39X-13613-00	.REED, valve	2	
3	39X-13616-00	.STOPPER, reed valve	2	
4	98503-03006	.SCREW, pan head	8	
5	92903-03100	.WASHER, spring	8	
6	39X-13621-00	GASKET, valve seat	1	
7	40T-13565-00	JOINT, carburetor	1	
8	40T-13581-00	CHAMBER, air	1	
9	4V3-1441K-00	EMBLEM	1	
10	26A-13575-00	BAND	1	
11	40T-13584-00	PIPE, intake manifold	1	
12	90467-23059	CLIP	2	
13	90460-56257	CLAMP, hose	1	
14	91316-06020	BOLT	6	
15	90460-74254	CLAMP, hose	1	
16	40T-14453-00	JOINT, air cleaner 1	1	
17	56A-14459-00	HOLDER, guide	1	
18	39X-14462-00	SEAL	1	
19	95601-05100	NUT, u	6	
20	39K-14457-00	SEAL	1	
21	90504-03033	SPRING, compression	1	
22	39X-W1441-00	AIR CLEANER CASE COMP.	1	
23	92901-05200	WASHER, plain	6	
24	39X-14451-00	ELEMENT, air cleaner	1	
25	39X-14458-00	GUIDE	1	
26	56A-14468-00	PLATE, element fitting	1	
27	43N-14412-00	CAP, cleaner case 1	1	white
28	39X-14457-00	SEAL	1	

B4

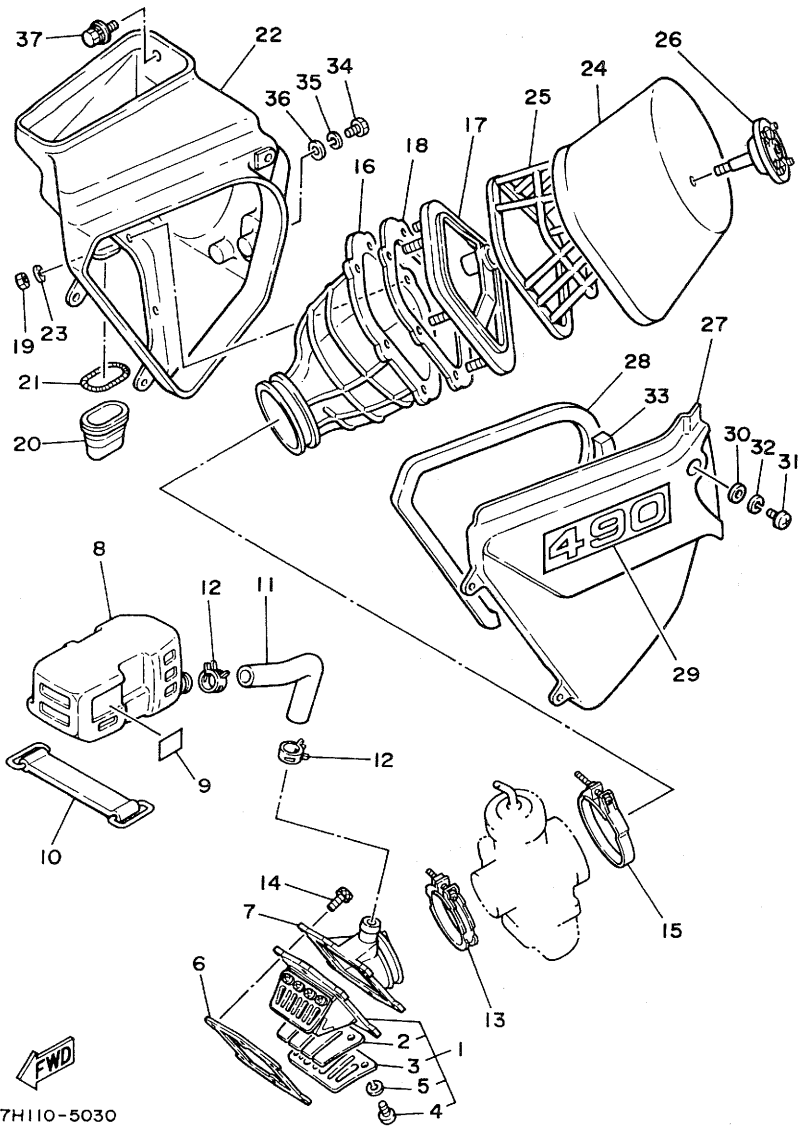


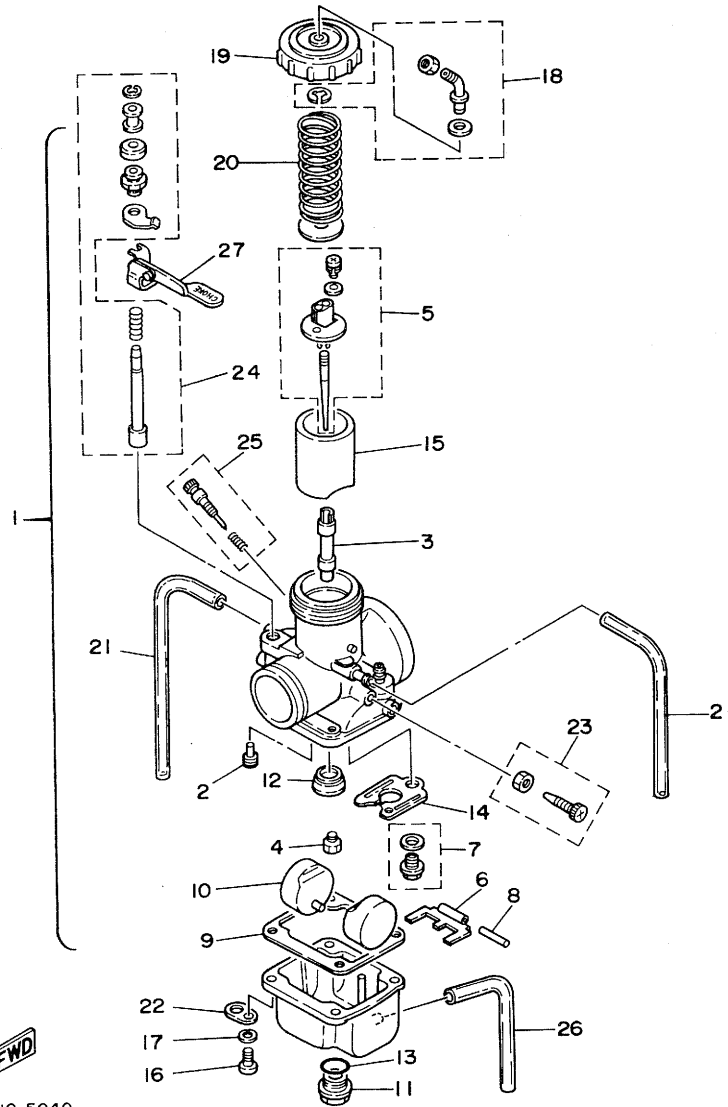
FIG. 3 INTAKE

REF. NO.	PART NO.	DESCRIPTION	Q'TY	REMARKS
29	40T-21737-10	EMBLEM	1	for w
30	92901-06200	WASHER, plain	3	
31	92501-06012	SCREW, pan head	3	
32	92901-06100	WASHER, spring	3	
33	39X-14452-00	SEAL	1	
34	97301-06012	BOLT	2	
35	92901-06100	WASHER, spring	2	
36	90201-061A5	WASHER, plate	2	
37	90119-06056	BOLT, with washer	1	

57H110-5030

B5

FIG. 4 CARBURETOR



REF. NO.	PART NO.	DESCRIPTION	Q'TY	REMARKS
1	57H-14101-00	CARBURETOR ASSY 1	1	
2	193-14142-40	.JET, pilot (# 40)	1	STD
	193-14142-35	.JET, pilot (# 35)	1	UR AP
	193-14142-45	.JET, pilot (# 45)	1	UR AP
3	8A7-14141-58	.NOZZLE, main	1	STD
	8A7-14141-56	.NOZZLE, main	1	UR AP
	8A7-14141-R0	.NOZZLE, main	1	UR AP
4	137-14143-88	.JET, main (#440)	1	STD
	137-14143-84	.JET, main (#420)	1	UR AP
	137-14143-86	.JET, main (#430)	1	UR AP
	137-14143-90	.JET, main (#450)	1	UR AP
	137-14143-92	.JET, main (#460)	1	UR AP
5	40T-1490J-00	.NEEDLE SET	1	
6	40T-14187-00	.ARM, float	1	
7	23X-14107-35	.NEEDLE VALVE SET	1	
8	537-14186-00	.PIN, float	1	
9	363-14184-00	.GASKET, float chamber	1	
10	214-14185-00	.FLOAT	2	
11	40T-14115-00	.PLUG, screw	1	
12	3R3-14153-00	.WASHER, main jet	1	
13	278-14117-00	.WASHER, plug screw	1	
14	40T-14146-00	.PLATE	1	
15	40T-14112-30	.VALVE, throttle 1	1	STD
	40T-14112-25	.VALVE, throttle 1	1	UR AP
	40T-14112-35	.VALVE, throttle 1	1	UR AP
16	98501-05016	.SCREW, pan head	4	
17	92901-05100	.WASHER, spring	4	
18	40T-14106-00	.CABLE ADJUST SCREW SET	1	

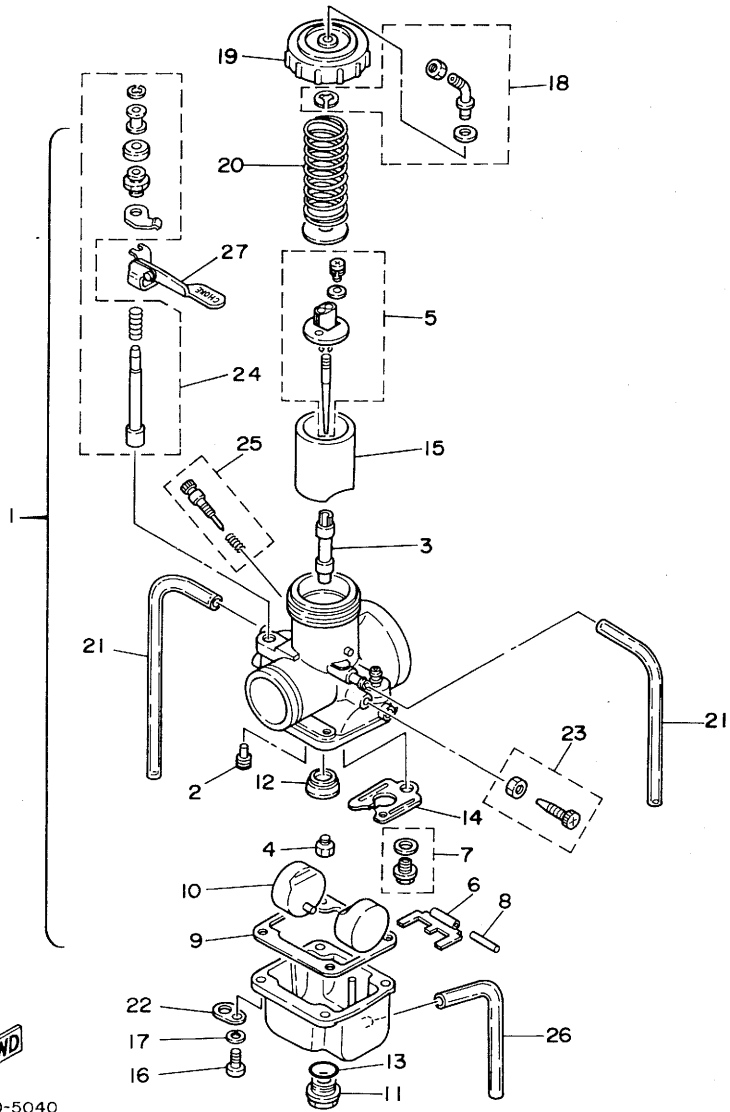


57H110-5040

B6

FIG. 4 CARBURETOR

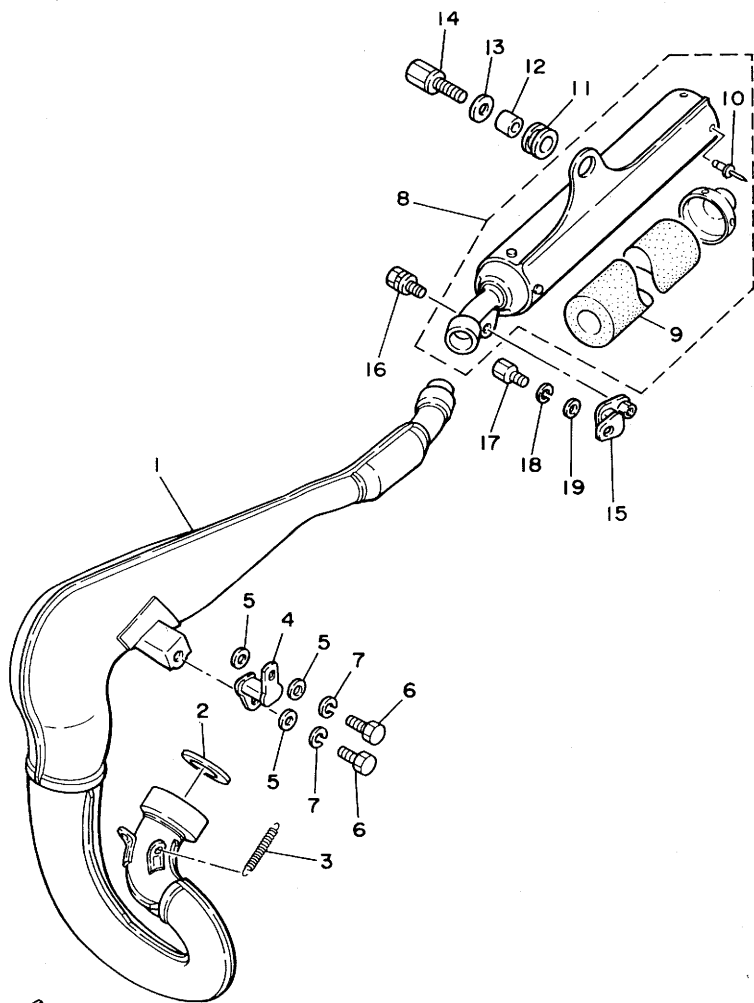
REF. NO.	PART NO.	DESCRIPTION	Q'TY	REMARKS
19	40T-14158-00	.TOP, mixing chamber	1	
20	8H0-14131-00	.SPRING, throttle valve	1	
21	310-14197-00	.PIPE	2	
22	313-14146-00	.PLATE	2	
23	40T-14103-00	.THROTTLE SCREW SET	1	
24	57H-1410A-00	.STARTER SET	1	
25	23X-14104-00	.AIR SCREW SET	1	
26	2K7-14197-00	.PIPE	1	
27	57H-14175-00	.LEVER, starter 1	1	



57H110-5040

B7

FIG. 5 EXHAUST

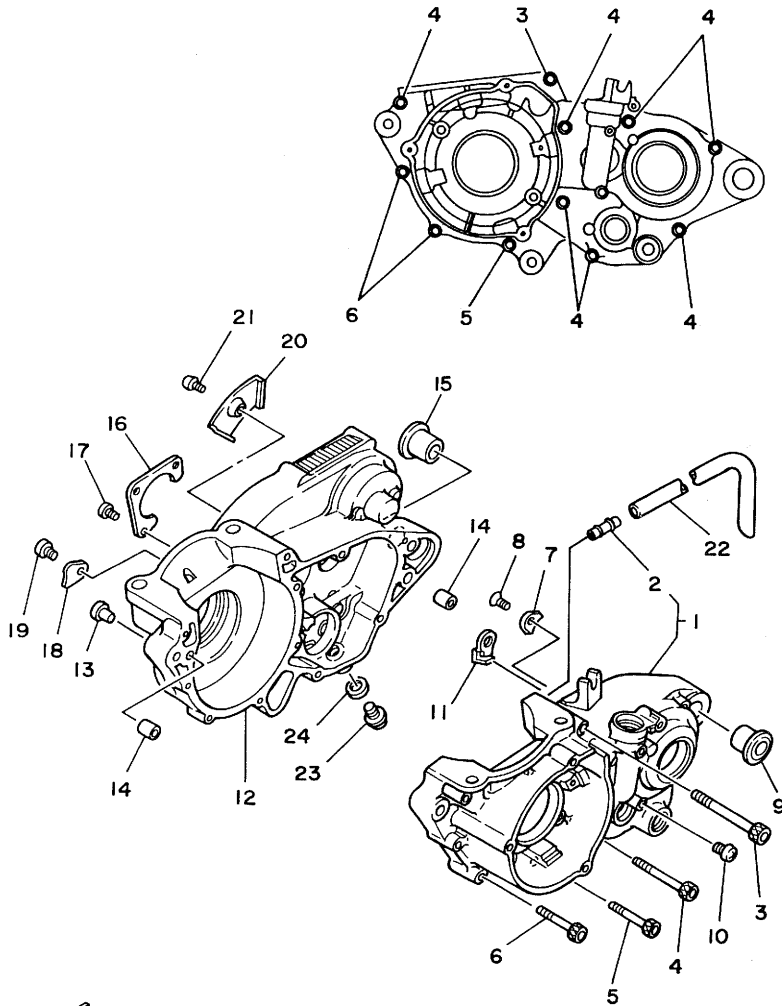


REF. NO.	PART NO.	DESCRIPTION	Q'TY	REMARKS
1	40T-14610-00	EXHAUST PIPE ASSY 1	1	
2	40T-14613-00	GASKET, exhaust pipe	1	
3	90507-20030	SPRING, tension	3	
4	40T-14771-00	STAY, muffler 1	1	
5	90201-08730	WASHER, plate	3	
6	97301-08016	BOLT	2	
7	92901-08100	WASHER, spring	2	
8	40T-14753-01	SILENCER, exhaust	1	
9	40T-1469A-00	.FIBER	1	
10	90267-40115	.RIVET, blind	4	
11	39X-14747-00	DAMPER, muffler	1	
12	90387-081A3	COLLAR	1	
13	90201-08612	WASHER, plate	1	
14	90109-08512	BOLT	1	
15	565-14771-00	STAY, muffler 1	1	
16	90109-06551	BOLT	1	
17	97301-06016	BOLT	1	
18	92901-06100	WASHER, spring	1	
19	90201-061A5	WASHER, plate	1	

FWD
57H110-5050

FIG. 6 CRANKCASE

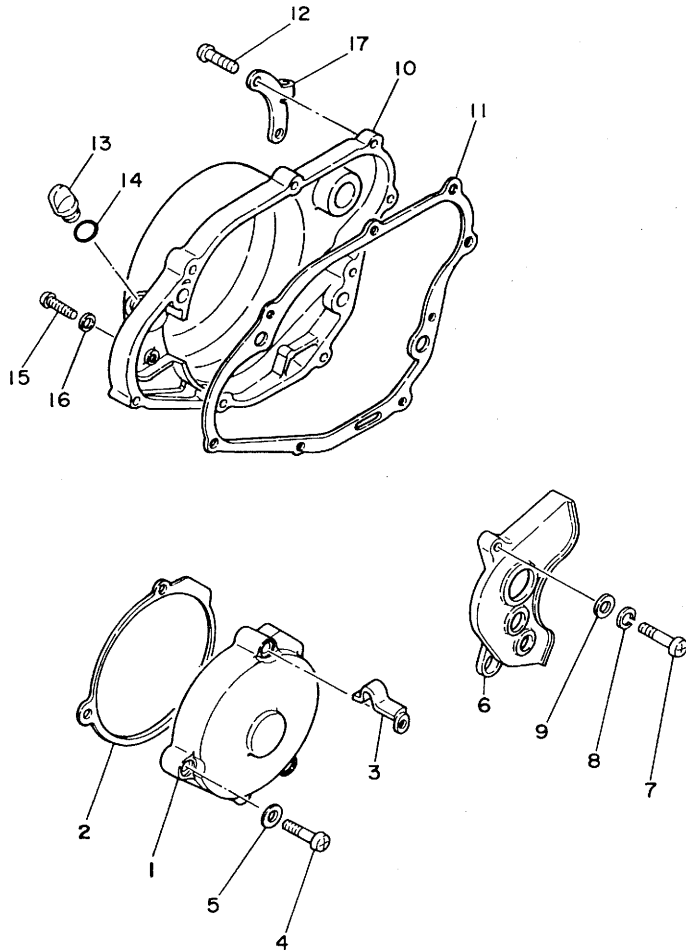
REF. NO.	PART NO.	DESCRIPTION	Q'TY	REMARKS
1	3R5-W1511-00	CRANKCASE 1	1	
2	137-13115-00	.CONNECTOR, suction pipe	1	
3	91316-06075	BOLT	1	
4	91316-06060	BOLT	7	
5	91316-06050	BOLT	1	
6	91316-06045	BOLT	2	
7	56A-15383-00	PLATE, bearing cover	1	
8	92701-06012	SCREW, flat head	1	
9	90387-160H4	COLLAR	1	
10	92506-06012	SCREW, pan head	1	
11	23X-26393-00	HOLDER	1	
12	3R5-15121-05	CRANKCASE 2	1	
13	90338-07011	PLUG	1	
14	91810-05016	PIN, dowel	4	
15	90387-160H4	COLLAR	1	
16	23X-15381-00	PLATE, bearing cover	1	
17	92501-06012	SCREW, pan head	3	
18	4V4-15118-00	HOLDER	1	
19	92501-06010	SCREW, pan head	1	
20	3R4-15113-00	PLATE	1	
21	92501-06012	SCREW, pan head	1	
22	90445-08605	HOSE	1	
23	90340-12095	PLUG, straight screw	1	
24	90430-12038	GASKET	1	



23X100-3070

B9

FIG. 7 CRANKCASE COVER 1



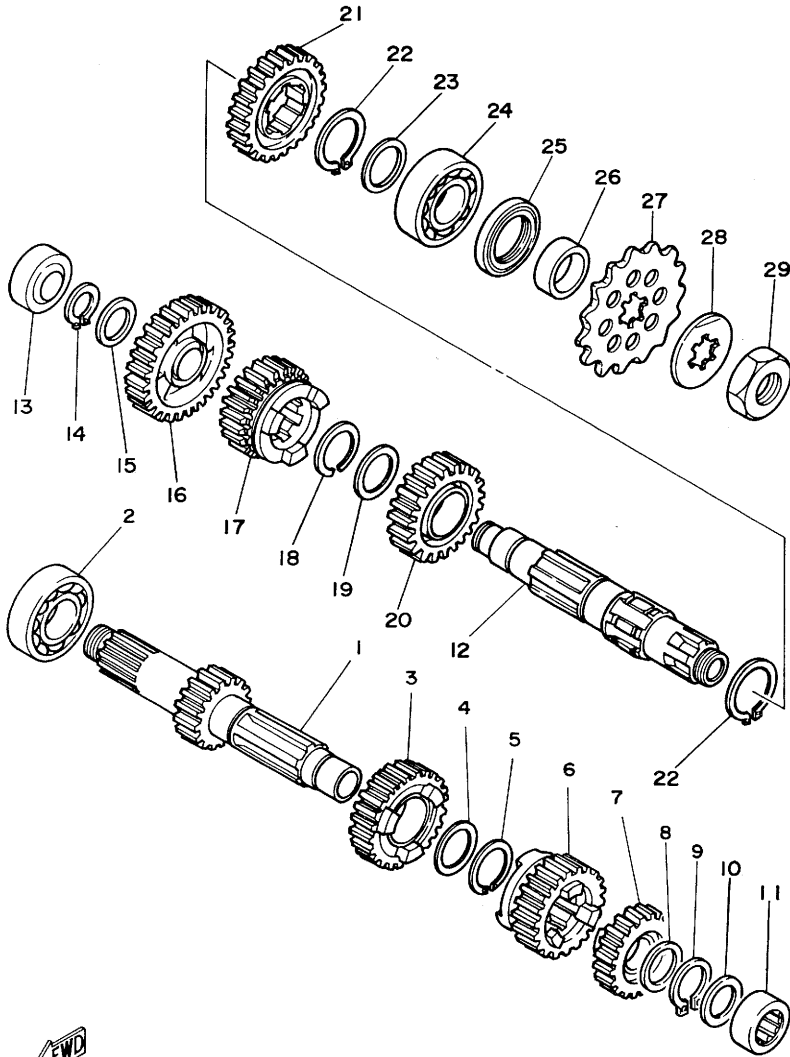
REF. NO.	PART NO.	DESCRIPTION	Q'TY	REMARKS
1	40T-15411-00	COVER, crankcase 1	1	
2	4V4-15451-00	GASKET, crankcase cover 1	1	
3	90465-06247	CLAMP	1	
4	92506-06035	SCREW, pan head	3	
5	92906-06600	WASHER, plate	3	
6	23X-15421-00	COVER, crankcase 2	1	
7	92506-06025	SCREW, pan head	1	
8	92906-06100	WASHER, spring	1	
9	92906-06600	WASHER, plate	1	
10	40T-15431-00	COVER, crankcase 3	1	
11	3R4-15462-00	GASKET, crankcase cover 3	1	
12	91316-06025	BOLT	8	
13	168-15362-00	PLUG, oil level	1	
14	93210-14104	O-RING	1	
15	92506-06008	SCREW, pan head	1	
16	90430-06016	GASKET	1	
17	56A-15378-00	HOLDER	1	



57H110-5070

FIG. 10 TRANSMISSION

REF. NO.	PART NO.	DESCRIPTION	Q'TY	REMARKS
1	5X6-17411-01	AXLE, main	1	
2	93300-20501	BEARING	1	
3	5X6-17141-00	GEAR, 4th pinion (24T)	1	
4	256-17154-00-10	WASHER, gear hold	1	
5	93440-25084	CIRCLIP	1	
6	5X6-17131-00	GEAR, 3rd pinion (22T)	1	
7	5X6-17121-01	GEAR, 2nd pinion	1	
8	90201-203E7	WASHER, plate	1	
9	93410-20038	CIRCLIP	1	
10	90201-20276	WASHER, plate (1.0T)	1	
11	93311-62035	BEARING, cylindrical	1	
12	5X6-17421-00	AXLE, drive	1	
13	93311-62035	BEARING, cylindrical	1	
14	93410-20038	CIRCLIP	1	
15	90201-20278	WASHER, plate	1	
16	5X6-17211-00	GEAR, 1st wheel (28T)	1	
17	5X6-17241-00	GEAR, 4th wheel (20T)	1	
18	93440-25084	CIRCLIP	1	
19	256-17154-00-10	WASHER, gear hold	1	
20	5X6-17231-00	GEAR, 3rd wheel (23T)	1	
21	5X6-17221-00	GEAR, 2nd wheel (25T)	1	
22	93410-30012	CIRCLIP	2	
23	90201-25290	WASHER, plate	1	
24	93300-20501	BEARING	1	
25	93102-32M07	OIL SEAL	1	
26	90387-25663	COLLAR	1	
27	23X-17461-40	SPROCKET, drive (14T)	1	STD
	23X-17461-30	SPROCKET, drive (13T)	1	AP

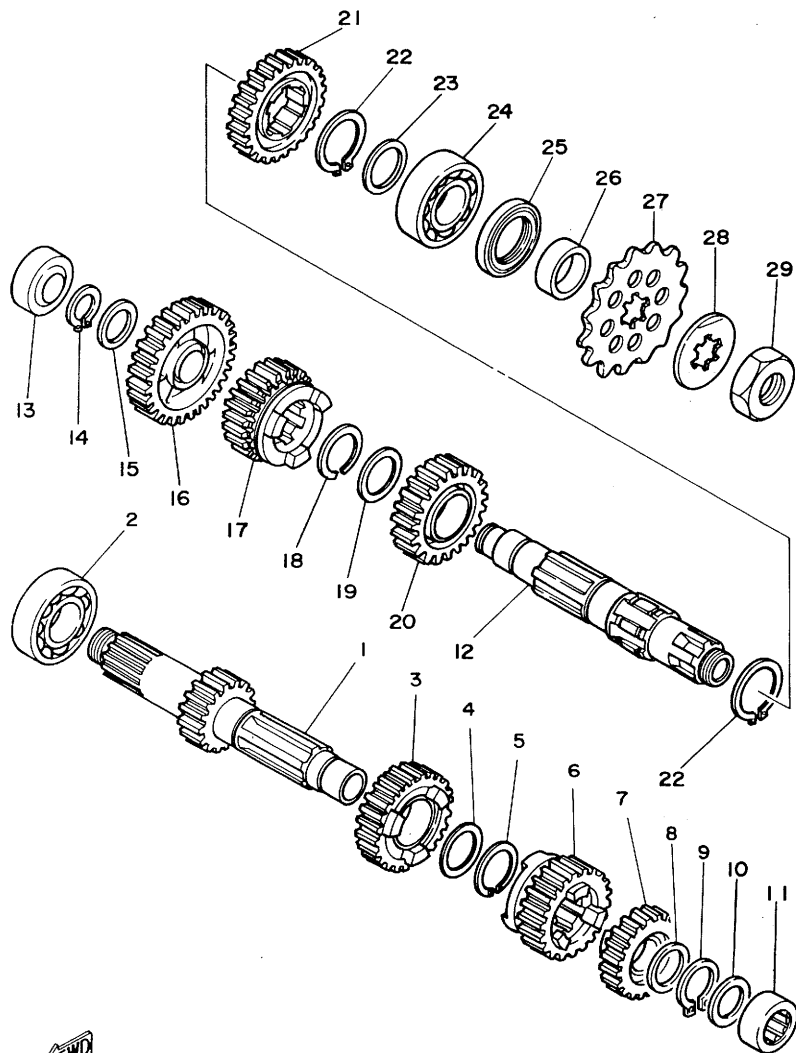


5X6100-2112

B13

FIG. 10 TRANSMISSION

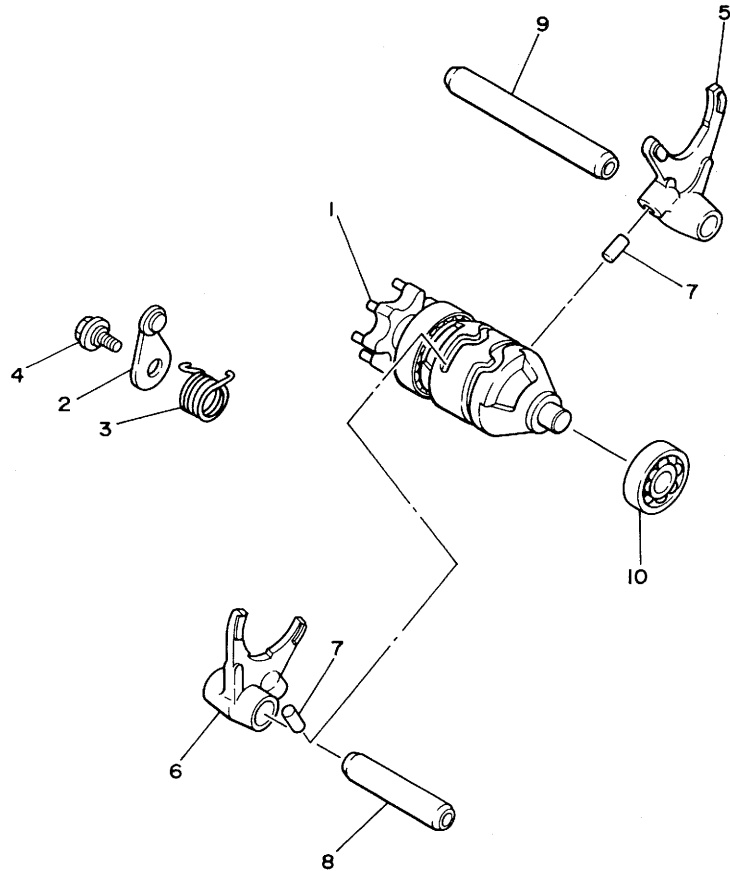
REF. NO.	PART NO.	DESCRIPTION	Q'TY	REMARKS
27	23X-17461-50	SPROCKET, drive (15T)	1	AP
28	90215-21239	WASHER, lock	1	
29	90179-20255	NUT	1	



5X6100-2112

B14

FIG. 11 SHIFT CAM. FORK



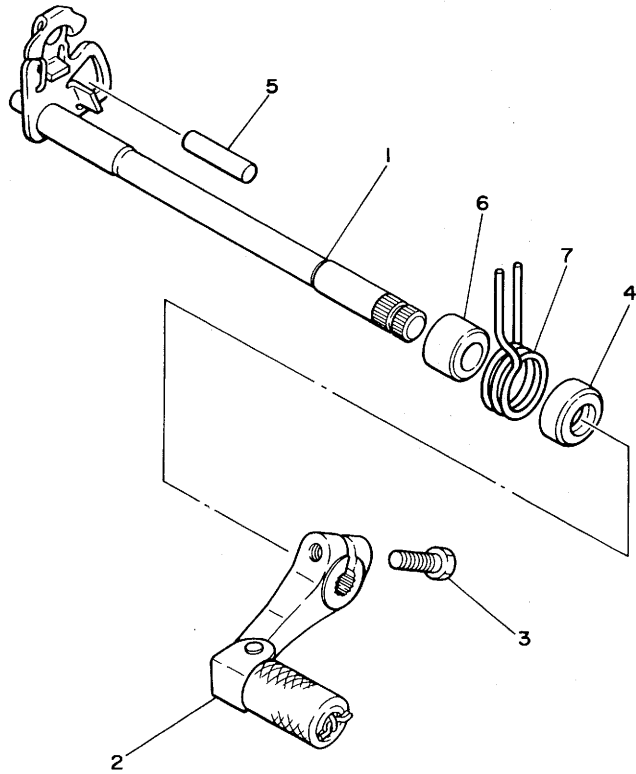
REF. NO.	PART NO.	DESCRIPTION	Q'TY	REMARKS
1	23X-18540-00	SHIFT CAM ASSY	1	
2	3R4-18140-00	STOPPER LEVER ASSY	1	
3	90508-26421	SPRING, torsion	1	
4	1W1-18177-00	BOLT, stopper	1	
5	5X6-18513-00	FORK, shift 3	1	
6	5X6-18512-00	FORK, shift 2	1	
7	93606-14154	PIN, dowel	2	
8	5X5-18531-01	BAR, shift fork guide 1	1	
9	5X5-18535-01	BAR, shift fork guide 2	1	
10	93306-20107	BEARING (B6201)	1	


23X100-3120

B15

FIG. 12 SHIFT SHAFT

REF. NO.	PART NO.	DESCRIPTION	Q'TY	REMARKS
1	23X-18101-00	SHIFT SHAFT ASSY	1	
2	23X-18110-00	SHIFT PEDAL ASSY	1	
3	97321-06025	BOLT	1	
4	93102-12106	OIL SEAL	1	
5	93608-25150	PIN, dowel	1	
6	90560-12171	SPACER	1	
7	90508-29361	SPRING, torsion	1	

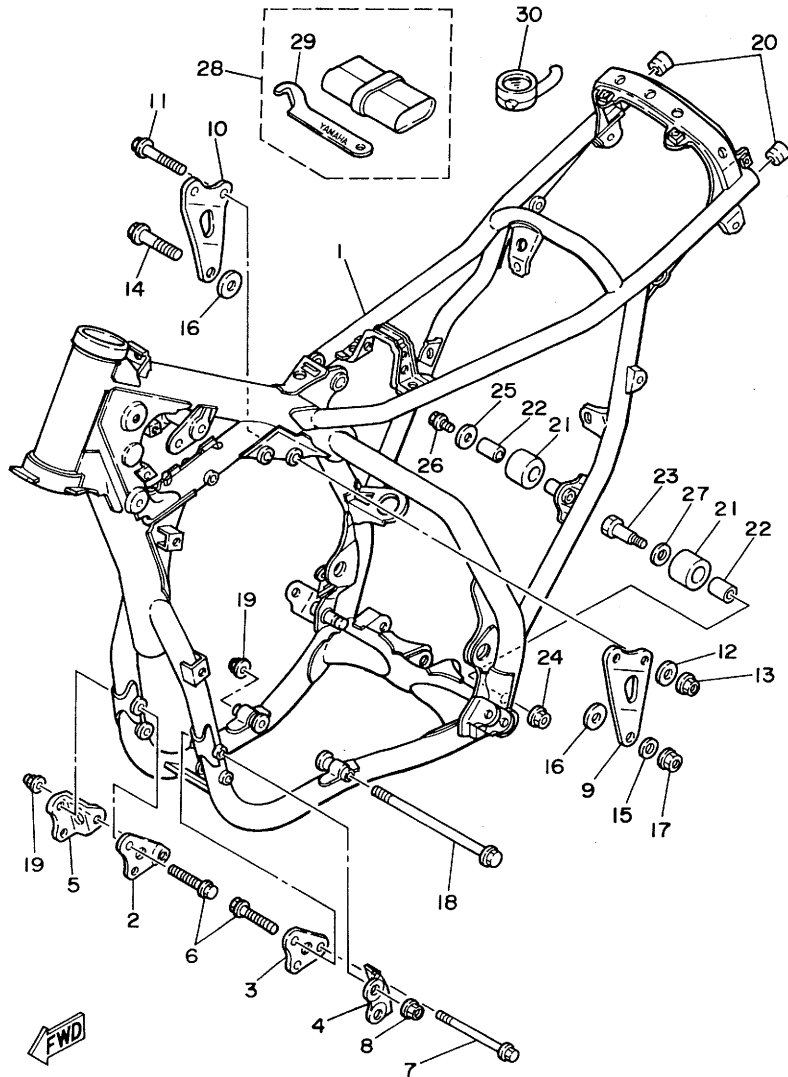


23X100-3130

C2

FIG. 13 FRAME

REF. NO.	PART NO.	DESCRIPTION	Q'TY	REMARKS
1	57H-21110-00-FH	FRAME COMP.	1	fire red
2	40T-21416-00	BRACKET, front upper 2	1	
3	40T-21415-00	BRACKET, front upper 1	1	
4	40T-2141K-00	BRACKET, outer 1	1	
5	40T-2141L-00	BRACKET, outer 2	1	
6	95821-08060	BOLT, flange	4	
7	95811-08110	BOLT, flange	1	
8	90185-08113	NUT, self-locking	4	
9	40T-21425-00	BRACKET, rear upper 1	1	
10	40T-21426-00	BRACKET, rear upper 2	1	
11	95811-08055	BOLT, flange	2	
12	90202-08022	WASHER, plate	2	
13	90185-08113	NUT, self-locking	2	
14	95811-10065	BOLT, flange	1	
15	92901-10200	WASHER, plain	1	
16	90201-10139	WASHER, plate	2	
17	90179-10280	NUT	1	
18	95811-08180	BOLT, flange	1	
19	90185-08113	NUT, self-locking	2	
20	90339-13005	PLUG	2	
21	22W-22178-01	TENSIONER	2	
22	4V4-22184-00	BUSH	2	
23	90109-08705	BOLT	1	
24	90185-08106	NUT, self-locking	1	
25	90201-08753	WASHER, plate	1	
26	95802-08012	BOLT, flange	1	
27	90201-13202	WASHER, plate	1	
28	23X-28100-01	TOOL KIT	1	

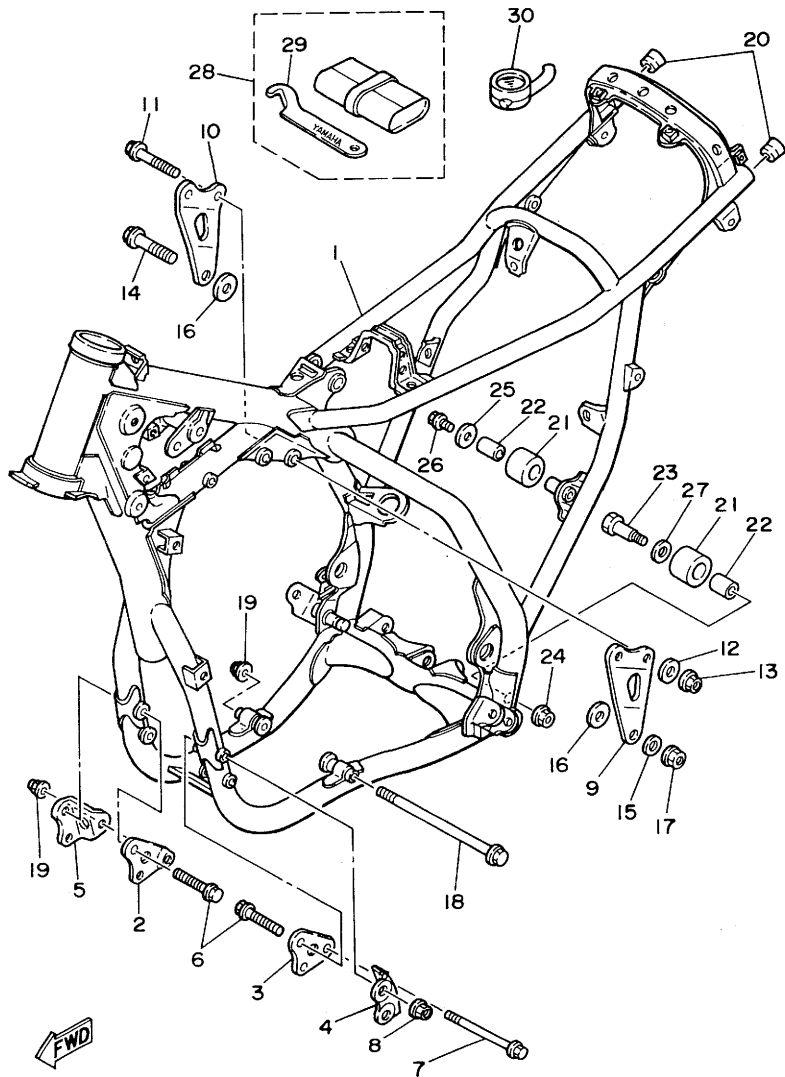


57H110-5130

C3

FIG. 13 FRAME

REF. NO.	PART NO.	DESCRIPTION	Q'TY	REMARKS
29	23X-28135-00	.SPANNER, special	1	
30	2X4-2811A-00	GAUGE, air	1	

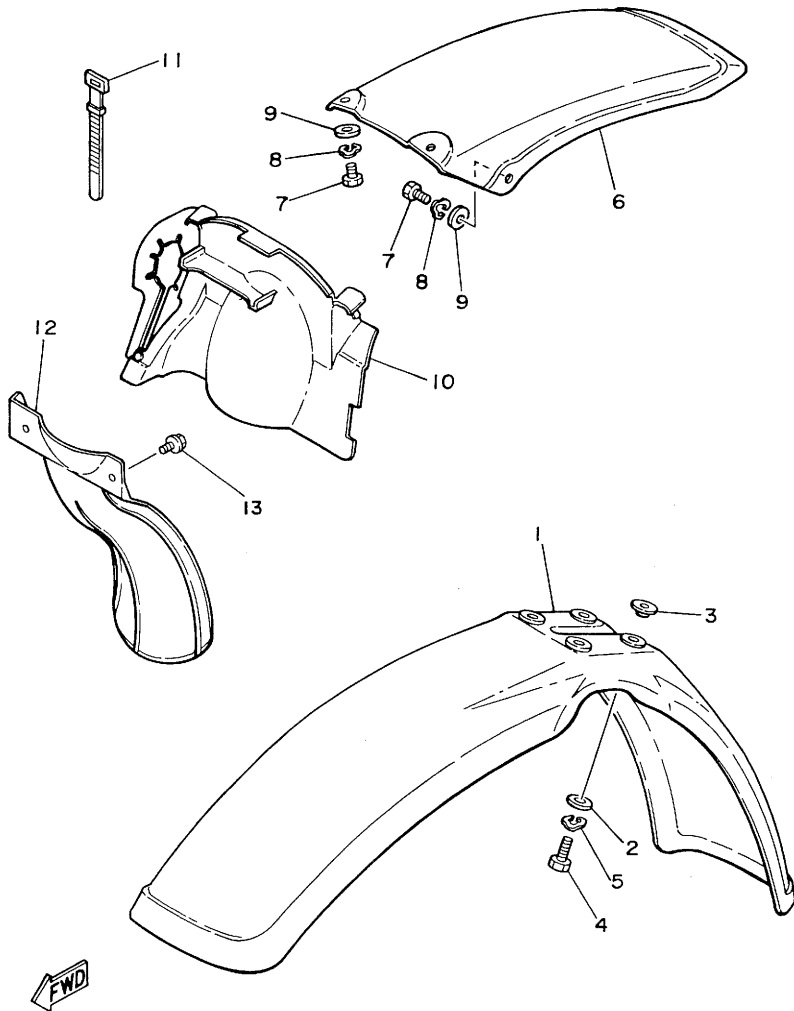


57H110-5130

C4

FIG. 14 FENDER

REF. NO.	PART NO.	DESCRIPTION	Q'TY	REMARKS
1	5X6-21511-10	FENDER, front	1	white
2	90201-06571	WASHER, plate	4	
3	90387-06681	COLLAR	4	
4	97302-06020	BOLT	4	
5	92902-06700	WASHER	4	
6	3R4-21611-10	FENDER, rear	1	white
7	97301-06016	BOLT	4	
8	92902-06700	WASHER	4	
9	90201-06571	WASHER, plate	4	
10	39X-21620-00	MUD GUARD COMP.	1	
11	437-83936-00	BAND, switch cord	1	
12	39X-21642-00	GUARD, flap	1	
13	90119-06042	BOLT, with washer	2	

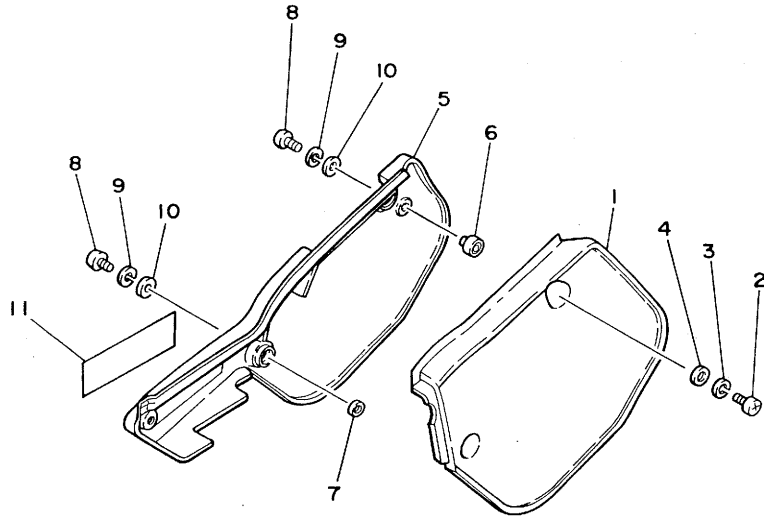


40T100-4140

C5

FIG. 15 SIDE COVER

REF. NO.	PART NO.	DESCRIPTION	Q'TY	REMARKS
1	39X-21711-10-98	COVER, side 1	1	low gloss black/white
2	92501-06014	SCREW, pan head	2	
3	92901-06100	WASHER, spring	2	
4	90201-06571	WASHER, plate	2	
5	39X-21721-10-98	COVER, side 2	1	low gloss black/white
6	22W-24181-00	DAMPER, locating 1	4	
7	92902-08200	WASHER	2	
8	92501-06014	SCREW, pan head	2	
9	92901-06100	WASHER, spring	2	
10	90201-06571	WASHER, plate	2	
11	40T-21737-10	EMBLEM	1	for w

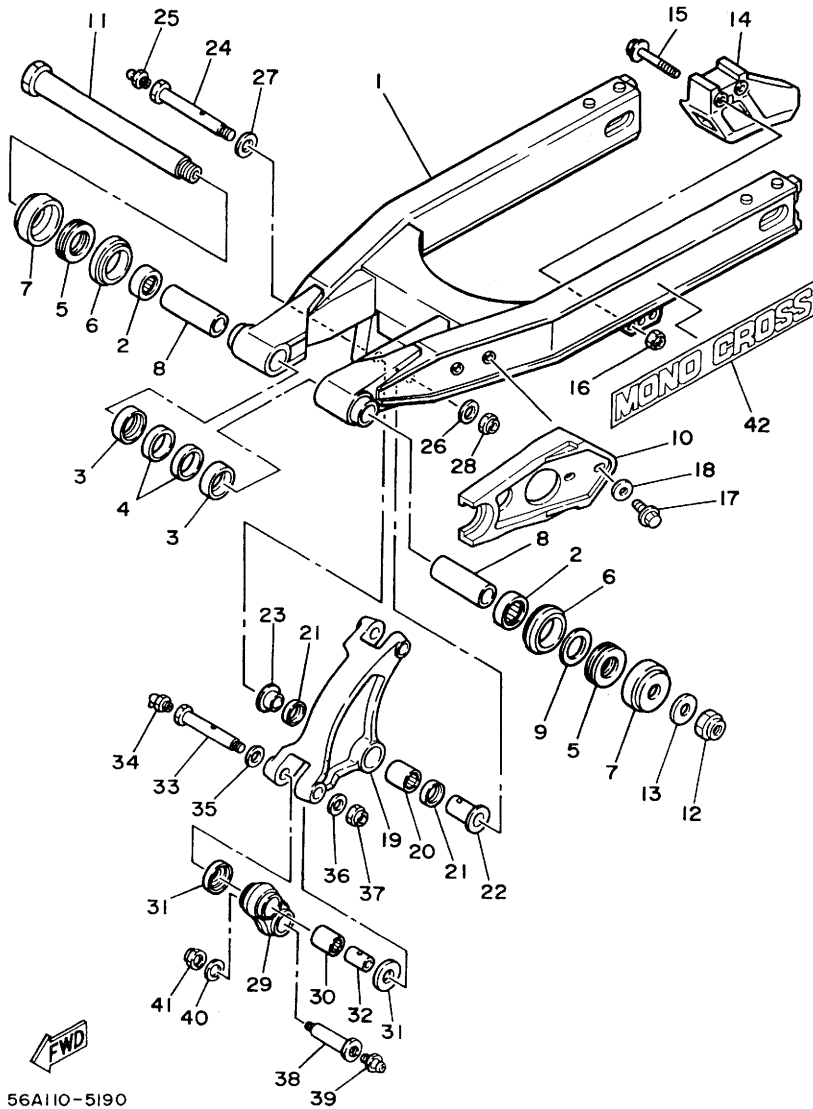


57H664-5150

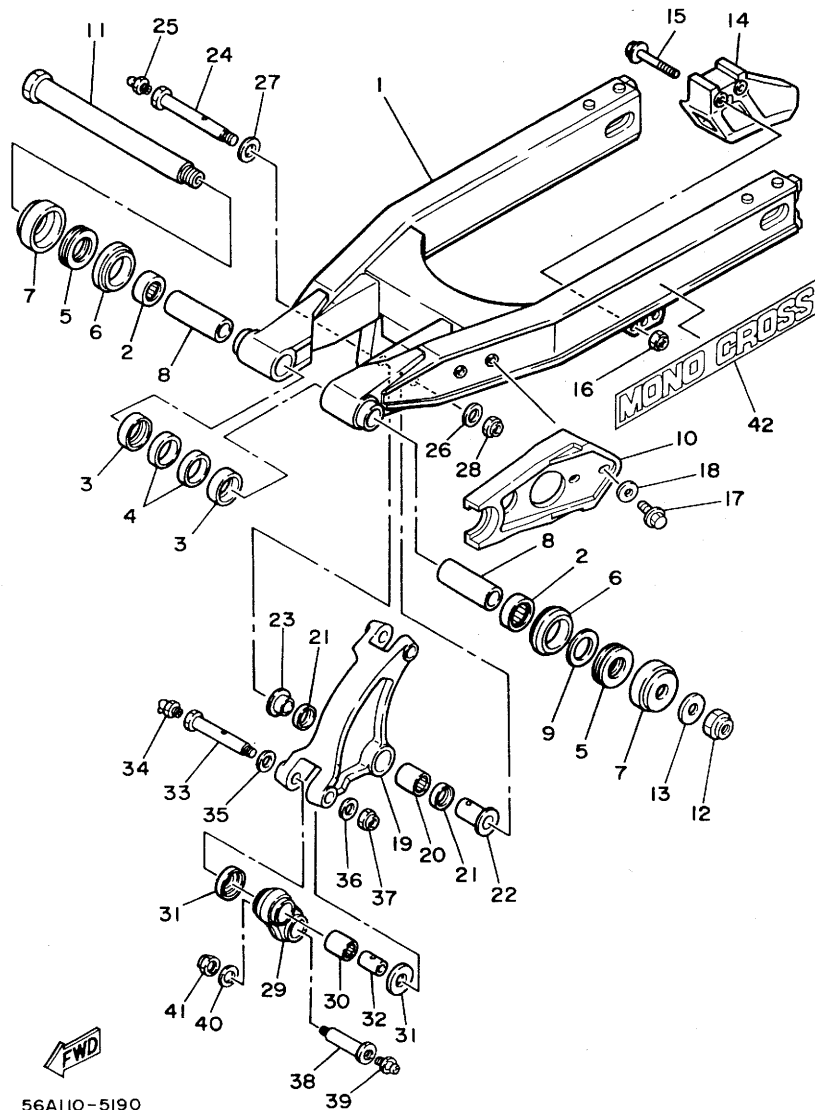
C6

FIG. 16 REAR ARM

REF. NO.	PART NO.	DESCRIPTION	Q'TY	REMARKS
1	56A-22110-00	REAR ARM COMP.	1	
2	93317-32231	BEARING, cylindrical	2	
3	90380-22111	BUSH, solid	2	
4	93106-22019	OIL SEAL	2	
5	93342-22208	BEARING	2	
6	93108-35004	OIL SEAL	2	
7	3R4-22129-00	COVER, thrust 2	2	
8	90380-16077	BUSH, solid	2	
9	156-22127-00	SHIM (0.3T)	1	UN
10	39W-22151-00	SEAL, guard	1	
11	5X6-22141-01	SHAFT, pivot	1	
12	90185-16127	NUT, self-locking	1	
13	90201-160F6	WASHER, plate	1	
14	23X-22199-10	SUPPORT, chain	1	
15	95802-08055	BOLT, flange	2	
16	90185-08106	NUT, self-locking	2	
17	95801-06020	BOLT, flange	2	
18	90201-06067	WASHER, plate	2	
19	39X-2217A-00	ARM, relay	1	
20	93317-32034	BEARING, cylindrical	1	
21	93109-20029	OIL SEAL	2	
22	90387-147G6	COLLAR	1	
23	90387-147G7	COLLAR	1	
24	90109-12701	BOLT	1	
25	93700-06004	NIPPLE, grease	1	
26	90201-120A5	WASHER, plate	1	
27	90201-14222	WASHER, plate	1	
28	90185-12119	NUT, self-locking	1	



56A110-5190

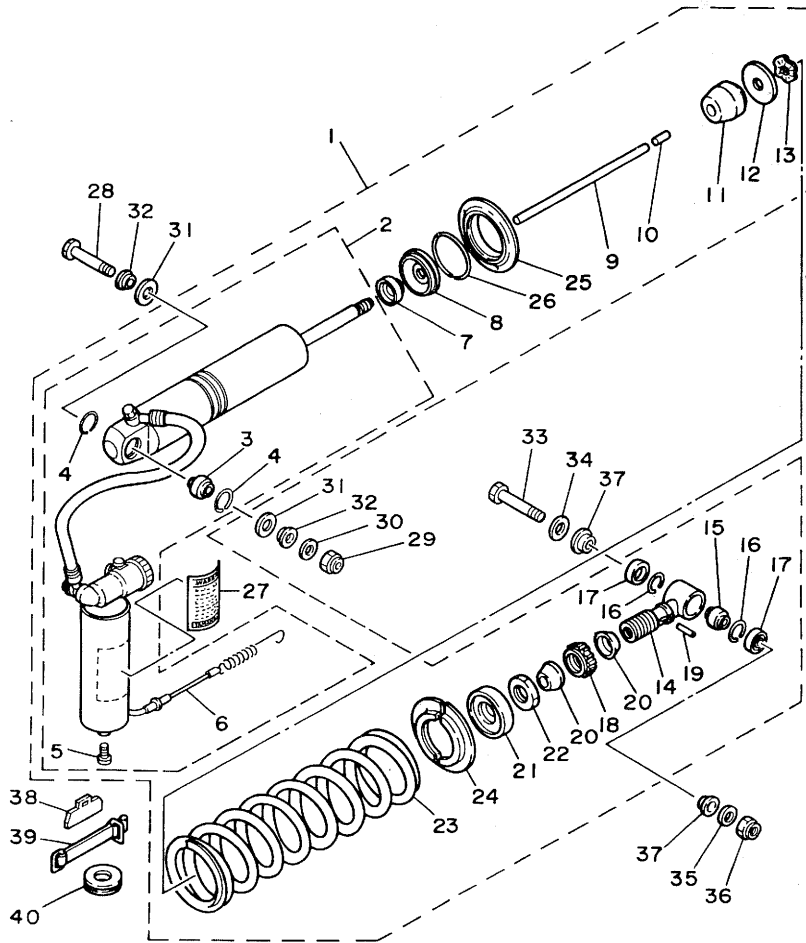


56A110-5190

FIG. 16 REAR ARM

REF. NO.	PART NO.	DESCRIPTION	Q'TY	REMARKS
29	39X-2217F-00	ROD, connecting 1	1	
30	93315-31732	BEARING, cylindrical	2	
31	23X-22129-00	COVER, thrust 2	4	
32	90387-121H1	COLLAR	2	
33	90109-10702	BOLT	1	
34	93700-06005	NIPPLE, grease	1	
35	90201-120E6	WASHER, plate	1	
36	90201-100E9	WASHER, plate	1	
37	90185-10120	NUT, self-locking	1	
38	90109-10703	BOLT	1	
39	93700-06004	NIPPLE, grease	1	
40	90201-10430	WASHER, plate	1	
41	95611-10100	NUT, u	1	
42	5X3-2218A-00	EMBLEM, rear arm	2	

FIG. 17 REAR SUSPENSION



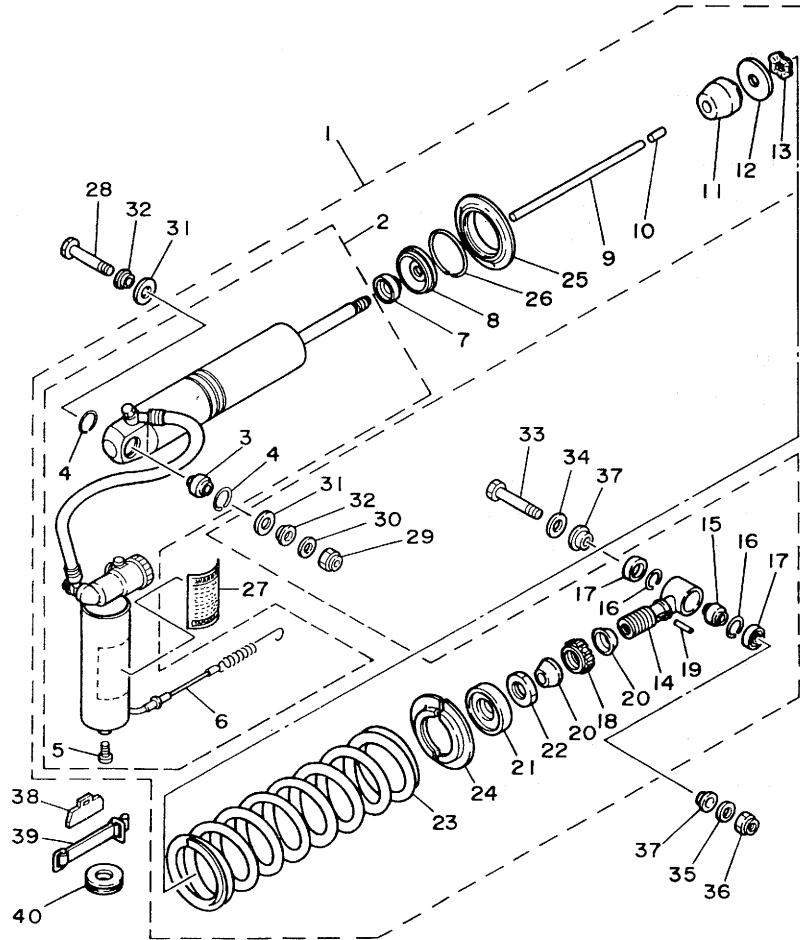
REF. NO.	PART NO.	DESCRIPTION	Q'TY	REMARKS
1	56A-22210-10-6W	SHOCK ABSORBER ASSY, rear	1	native red
2	56A-22401-00	.DAMPER SUB ASSY	1	
3	93399-99916	..BEARING	1	
4	93440-30113	..CIRCLIP	2	
5	98501-04006	..SCREW, pan head	1	
6	56A-22463-00	..CABLE, control 1	1	
7	23X-22475-00	.SEAL, dust	1	
8	26A-22472-00	.CAP, case	1	
9	56A-22489-00	.ROD, push	1	
10	93604-21193	.PIN, dowel	1	
11	39X-22493-00	.BUMP, stop	1	
12	3R4-22228-00	.SUPPORT, bump stop	1	
13	90206-14067	.WASHER, wave	1	
14	39X-22409-00	.UPPER BRACKET SUB ASSY	1	
15	93399-99916	.BEARING	1	
16	93440-30113	.CIRCLIP	2	
17	93104-18077	.OIL SEAL	2	
18	5X3-22497-00	.NUT, adjusting	1	
19	93604-26132	.PIN, dowel	1	
20	3R4-22221-01	.COVER	2	
21	23X-22213-00	.SEAT, spring upper	1	
22	90170-20213	.NUT	1	
23	39X-22212-10-6W	.SPRING (K=4.25)	1	native red
24	23X-22214-00	.GUIDE, spring 1	2	
25	23X-22223-00	.SEAT, spring lower	1	
26	93440-51103	.CIRCLIP	1	
27	56A-22499-10	.LAVEL, caution	1	
28	90109-10704	BOLT	1	



56A110-5200

C9

FIG. 17 REAR SUSPENSION



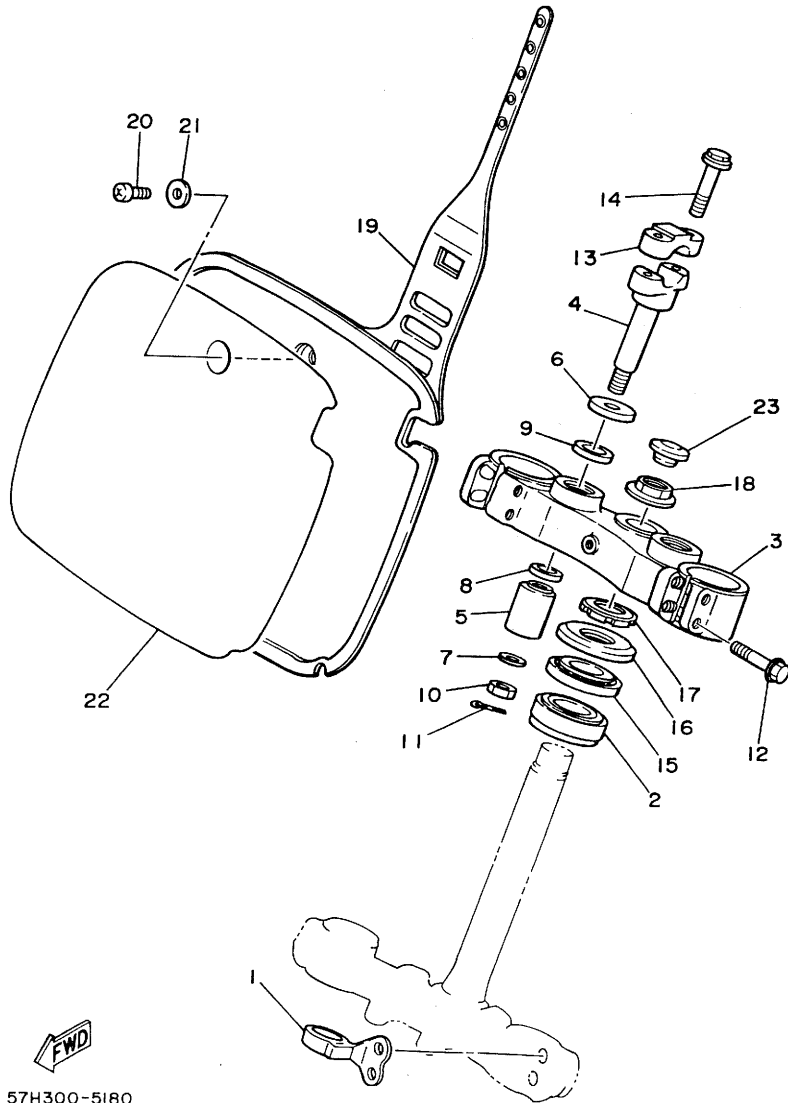
REF. NO.	PART NO.	DESCRIPTION	Q'TY	REMARKS
29	90185-10120	NUT, self-locking	1	
30	90201-10430	WASHER, plate	1	
31	23X-22211-00	COVER	2	
32	90387-127G8	COLLAR	2	
33	90109-10700	BOLT	1	
34	90201-120E6	WASHER, plate	1	
35	90201-100E9	WASHER, plate	1	
36	90185-10120	NUT, self-locking	1	
37	90387-126H8	COLLAR	2	
38	56A-22261-00	DAMPER, sub tank	1	
39	24X-22262-00	HOLDER, sub tank	1	
40	90480-25381	GROMMET	1	



56A110-5200

FIG. 18 STEERING

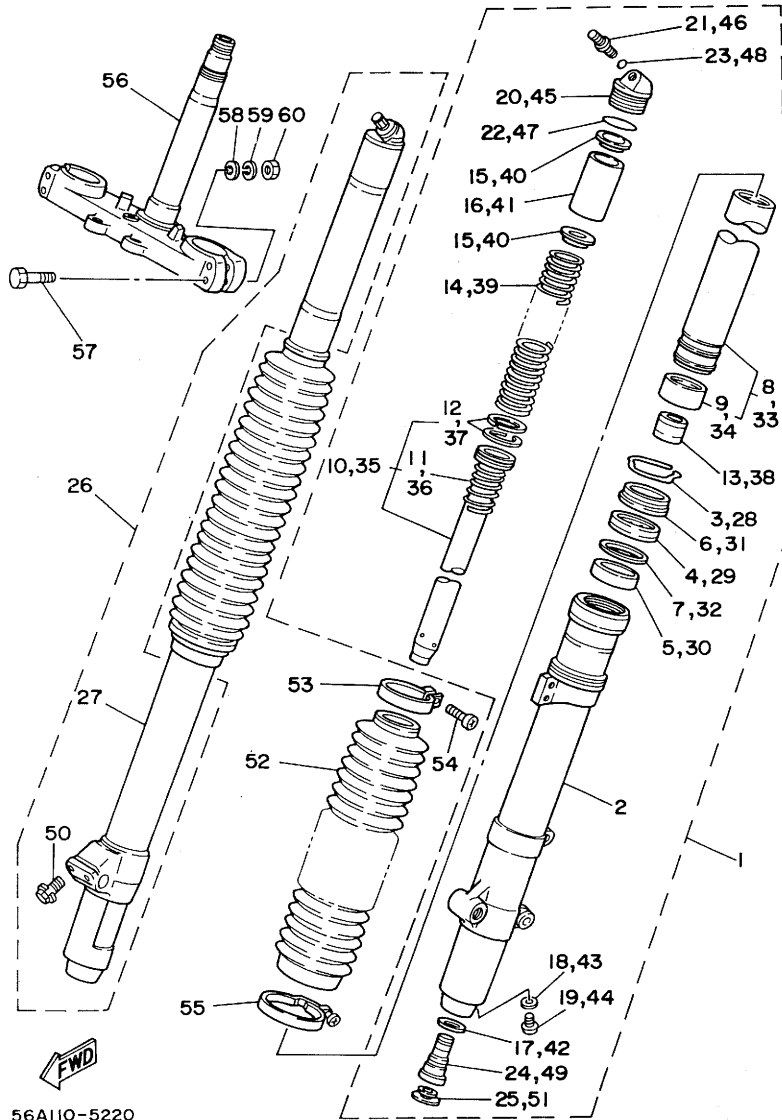
REF. NO.	PART NO.	DESCRIPTION	Q'TY	REMARKS
1	3R4-23389-00	GUIDE, cable	1	
2	93332-00008	BEARING	1	
3	40T-23435-00-98	CROWN, handle	1	low gloss black
4	1E6-23442-00	HOLDER, handle lower	2	
5	307-22123-00	BUSH 1	2	
6	90201-123E8	WASHER, plate	2	
7	90201-10141	WASHER, plate	2	
8	90387-121E8	COLLAR	2	
9	90202-14077	WASHER, plate	2	
10	90185-10037	NUT, self-locking	2	
11	91402-20018	PIN, cotter	2	
12	95821-08040	BOLT, flange	4	
13	1E6-23441-00	HOLDER, handle upper	2	
14	95821-08035	BOLT, flange	4	
15	93332-00023	BEARING	1	
16	1W1-23416-00	COVER, ball race 2	1	
17	90179-25033	NUT	1	
18	90179-22330	NUT	1	
19	5X6-23485-11	PLATE, number	1	clean, white
20	92501-06014	SCREW, pan head	1	
21	90201-06571	WASHER, plate	1	
22	5X6-23395-10	EMBLEM	1	
23	34K-2319U-00	CAP	1	



57H300-5180

C11

FIG. 19 FRONT FORK



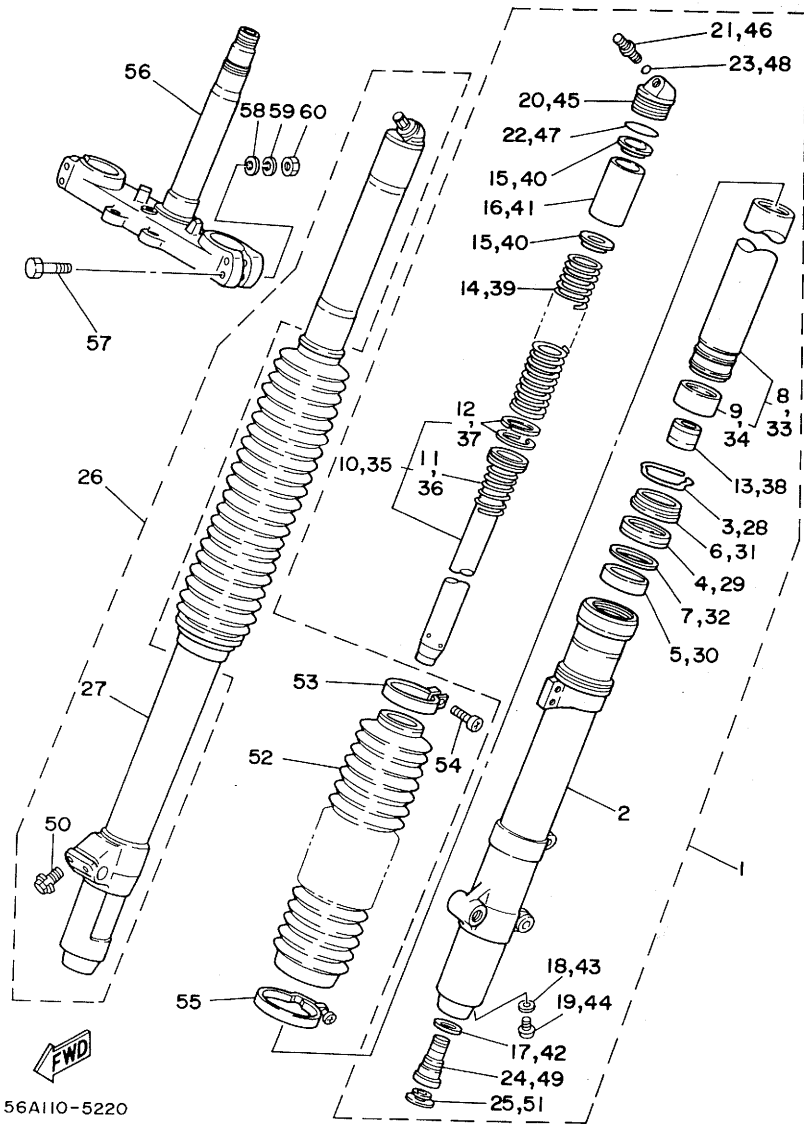
56A110-5220

REF. NO.	PART NO.	DESCRIPTION	Q'TY	REMARKS
1	56A-23102-MO	FRONT FORK ASSY (L.H)	1	
2	56A-23126-L0	.TUBE, outer 1	1	
3	4V4-23153-L0	.RING, snap	1	
4	23X-23145-L0	.OIL SEAL	1	
5	4V4-23125-L0	.METAL, slide 1	1	
6	23X-23144-L0	.SEAL, dust	1	
7	4V4-23146-L0	.WASHER, oil seal	1	
8	56A-23110-MO	.INNER TUBE COMP.1	1	
9	4V4-23171-L0	..PISTON, front fork	1	
10	56A-23170-MO	.CYLINDER COMP., front fork	1	
11	55Y-23152-MO	..SPRING, sub	1	
12	4V4-23157-L0	..RING, piston	2	
13	23X-23173-L0	.SPINDLE, taper	1	
14	39X-23141-00	.SPRING, front fork (K=0.305)	1	
15	4V4-23142-L0	.SEAT, spring upper	2	
16	5X6-23118-10	.SPACER (L=80)	1	
17	23X-23158-L0	.GASKET	1	
18	122-23129-00	.GASKET, drain plug	1	
19	4H7-23119-00	.PLUG, drain	1	
20	43M-23111-L0	.BOLT, cap	1	
21	23X-23190-L0	.AIR VALVE COMP.	1	
22	4V4-23188-L0	.O-RING	1	
23	3J2-23147-00	.O-RING	1	
24	56A-2316A-MO	.VALVE COMP.	1	
25	55Y-23126-MO	.PLUG	1	
26	56A-23103-MO	FRONT FORK ASSY (R.H)	1	
27	56A-23136-L0	.TUBE, outer 2	1	
28	4V4-23153-L0	.RING, snap	1	

C12

FIG. 19 FRONT FORK

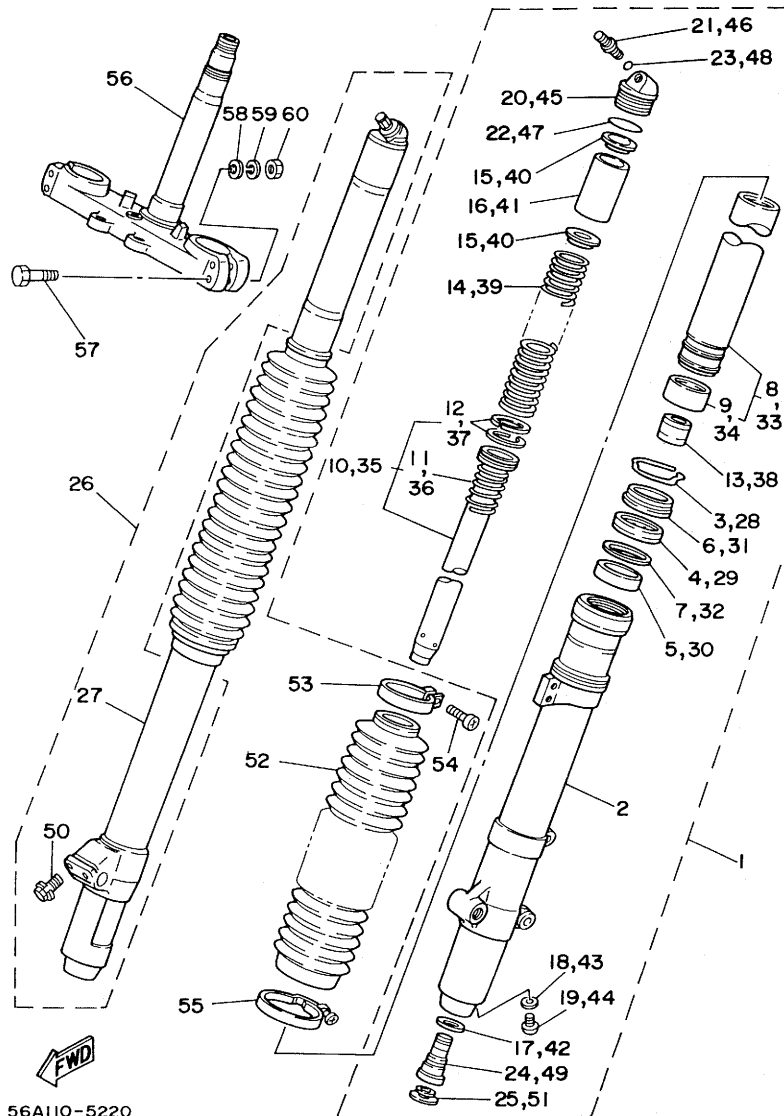
REF. NO.	PART NO.	DESCRIPTION	Q'TY	REMARKS
29	23X-23145-L0	.OIL SEAL	1	
30	4V4-23125-L0	.METAL, slide 1	1	
31	23X-23144-L0	.SEAL, dust	1	
32	4V4-23146-L0	.WASHER, oil seal	1	
33	56A-23110-M0	.INNER TUBE COMP.1	1	
34	4V4-23171-L0	..PISTON, front fork	1	
35	56A-23170-M0	.CYLINDER COMP., front fork	1	
36	55Y-23152-M0	..SPRING, sub	1	
37	4V4-23157-L0	..RING, piston	2	
38	23X-23173-L0	.SPINDLE, taper	1	
39	39X-23141-00	.SPRING, front fork (K=0.305)	1	
40	4V4-23142-L0	.SEAT, spring upper	2	
41	5X6-23118-10	.SPACER (L=80)	1	
42	23X-23158-L0	.GASKET	1	
43	122-23129-00	.GASKET, drain plug	1	
44	4H7-23119-00	.PLUG, drain	1	
45	43M-23111-L0	.BOLT, cap	1	
46	23X-23190-L0	.AIR VALVE COMP.	1	
47	4V4-23188-L0	.O-RING	1	
48	3J2-23147-00	.O-RING	1	
49	56A-2316A-M0	.VALVE COMP.	1	
50	5X6-23181-L0	.BOLT, hexagon socket head	1	
51	55Y-23126-M0	.PLUG	1	
52	43M-23191-L0	BOOT	2	red
53	43M-23192-L0	BAND	2	
54	98506-04018	SCREW, pan head	2	
55	43M-23489-L0	BAND	2	
56	39X-23340-00	UNDER BRACKET COMP.	1	



56A110-5220

C13

FIG. 19 FRONT FORK



REF. NO.	PART NO.	DESCRIPTION	Q'TY	REMARKS
57	90109-08397	BOLT	4	
58	90201-08544	WASHER, plate	4	
59	92901-08100	WASHER, spring	4	
60	95311-08600	NUT	4	

56A110-5220

C14

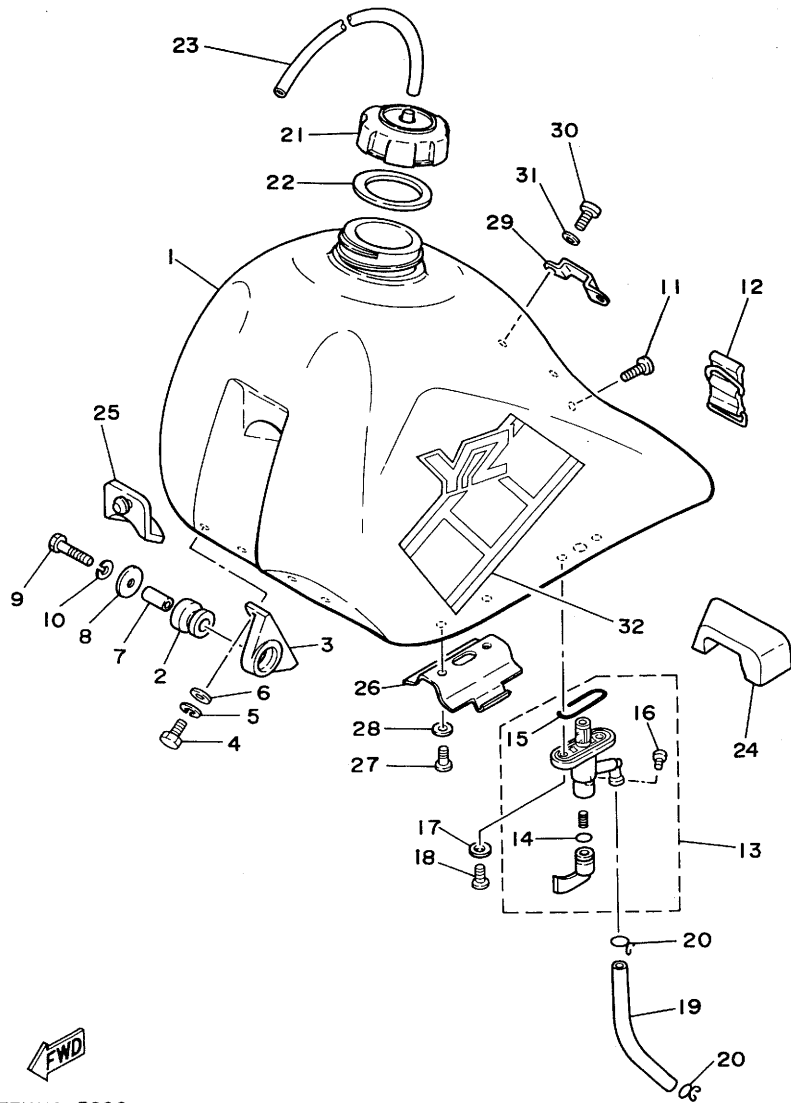


FIG. 20 FUEL TANK

REF. NO.	PART NO.	DESCRIPTION	Q'TY	REMARKS
1	40T-24110-10	FUEL TANK COMP.	1	clean white
2	90480-18354	GROMMET	2	
3	24X-24144-00	HOLDER, damper	2	
4	97301-06016	BOLT	4	
5	92901-06100	WASHER, spring	4	
6	90201-061A5	WASHER, plate	4	
7	90387-06387	COLLAR	2	
8	90201-06069	WASHER, plate	2	
9	97321-06030	BOLT	2	
10	92901-06100	WASHER, spring	2	
11	98902-06018	SCREW, bind	1	
12	3R3-24173-00	BAND, tank fitting 1	1	
13	2K5-24500-00	FUEL COCK ASSY 1	1	
14	214-24512-00	.GASKET	1	
15	1A0-24512-00	.O-RING	1	
16	619-24535-00	.SCREW, lever fitting	1	
17	90202-06010	WASHER, plate	2	
18	90149-06011	SCREW	2	
19	90445-11356	HOSE	1	
20	90467-10008	CLIP	2	
21	5X7-24611-01	BODY, cap	1	
22	5X7-24612-00	GASKET, cap	1	
23	90445-09300	HOSE	1	
24	39X-24181-00	DAMPER, locating 1	1	
25	23X-24184-00	DAMPER, locating 4	1	
26	5X6-2415F-01	STAY, chamber	1	
27	92501-06010	SCREW, pan head	2	
28	90201-061A5	WASHER, plate	2	

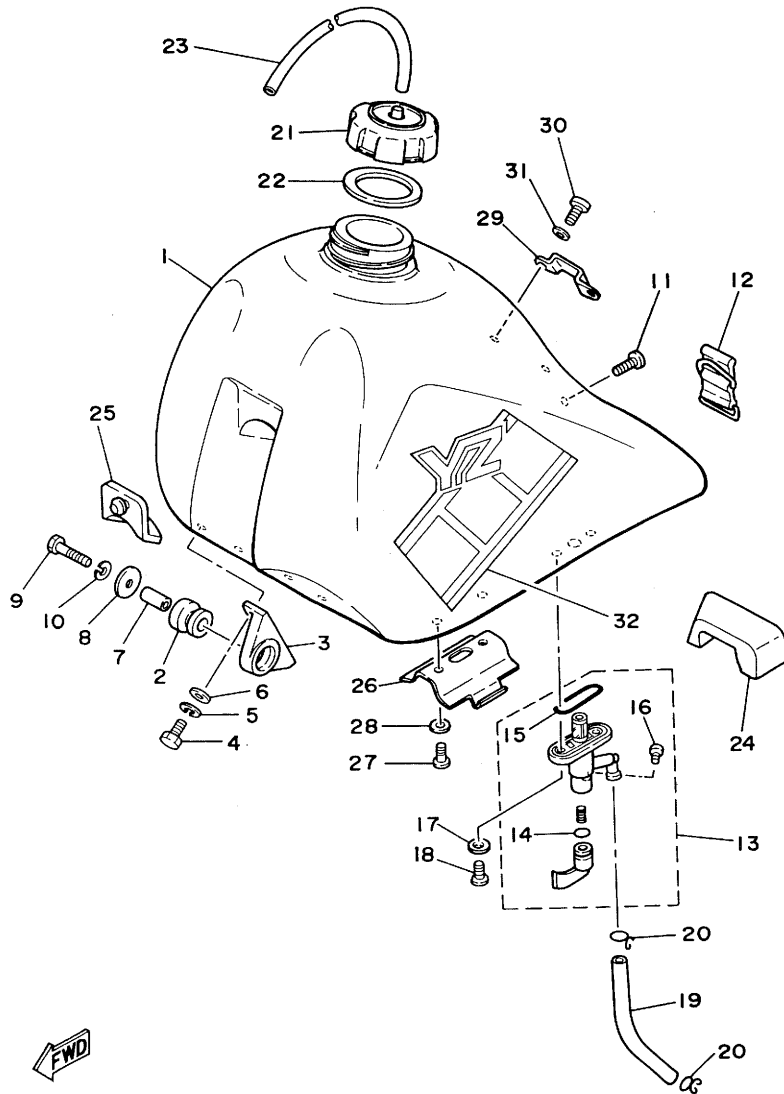


57H110-5200

C15

FIG. 20 FUEL TANK

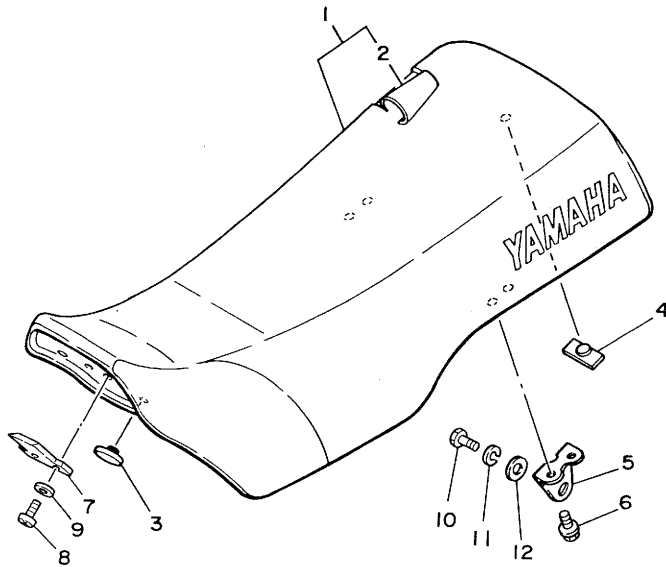
REF. NO.	PART NO.	DESCRIPTION	Q'TY	REMARKS
29	40T-2412F-00	BRACKET, seat	1	
30	92501-06012	SCREW, pan head	2	
31	90201-061A5	WASHER, plate	2	
32	57H-24250-10	GRAPHIC SET	1	



57H110-5200

D2

FIG. 21 SEAT



REF. NO.	PART NO.	DESCRIPTION	Q'TY	REMARKS
1	39X-W2473-10	SEMI-DOUBLE SEAT ASSY	1	red
2	23X-24731-10	.COVER, seat	1	
3	22W-24741-00	PAD, seat	2	
4	509-24724-00	DAMPER, seat	1	
5	39W-24738-00	BRACKET, seat	2	
6	95801-06012	BOLT, flange	4	
7	5X6-24748-10	BRACKET, seat	1	
8	92501-06012	SCREW, pan head	2	
9	90201-061A5	WASHER, plate	2	
10	97301-08016	BOLT	2	
11	92901-08100	WASHER, spring	2	
12	90201-087F0	WASHER, plate	2	

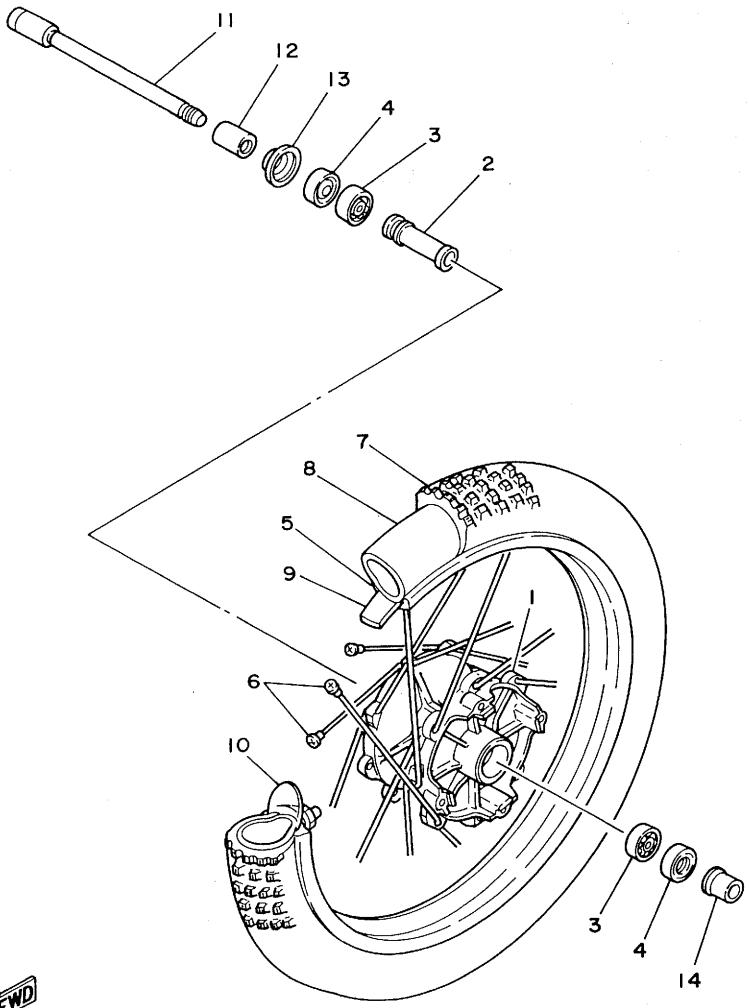


43NO10-4241

D3

FIG. 22 FRONT WHEEL

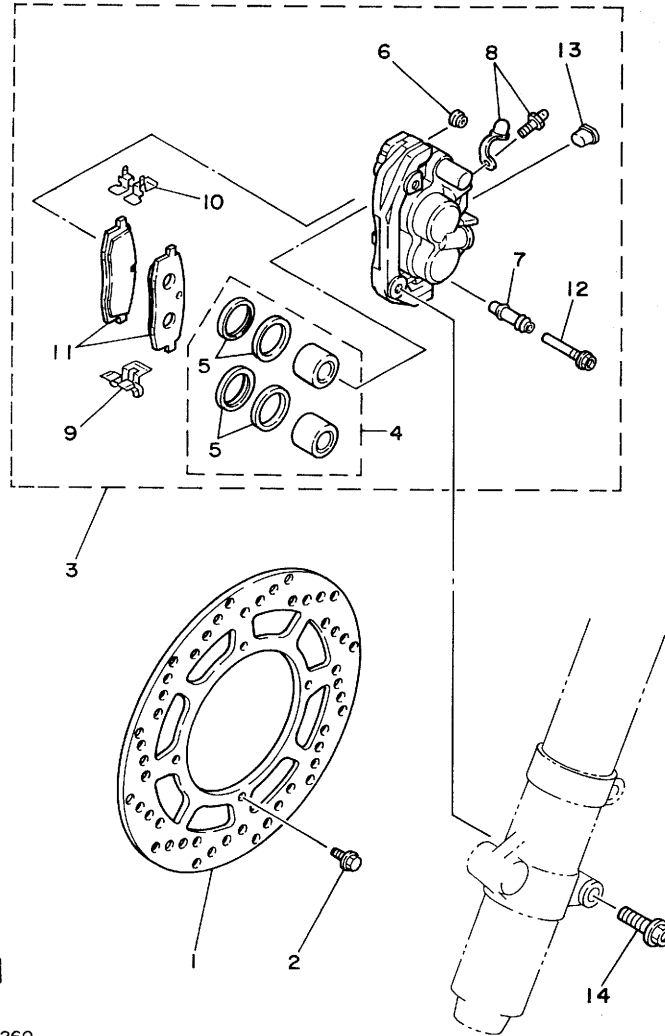
REF. NO.	PART NO.	DESCRIPTION	Q'TY	REMARKS
1	56A-25111-00-98	HUB, front	1	low gloss black
2	90560-15227	SPACER	1	
3	93306-20205	BEARING (B6202)	2	
4	93106-20021	OIL SEAL	2	
5	94416-21412	RIM (1.60-21)	1	
6	56A-25104-00	SPOKE SET, front	1	
7	94110-210F9	TIRE	1	bridgestone
8	94209-21229	TUBE	1	bridgestone
9	94330-21084	BAND, rim (3.00-21)	1	bridgestone
10	4V5-25194-00	SPACER, bead	1	
11	3R4-25181-01	AXLE, wheel	1	
12	90387-15535	COLLAR	1	
13	322-25118-00	COVER, hub dust	1	
14	90387-157L9	COLLAR	1	



56A110-5250

D4

FIG. 23 FRONT BRAKE CALIPER



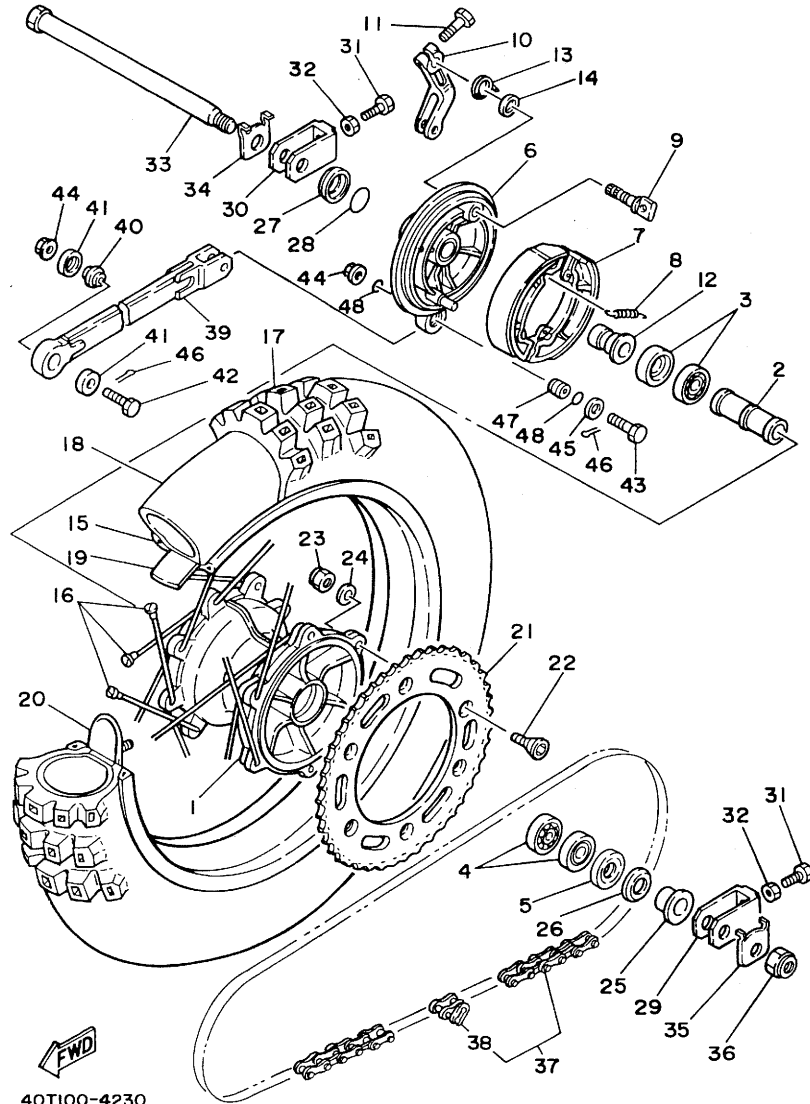
REF. NO.	PART NO.	DESCRIPTION	Q'TY	REMARKS
1	56A-25831-00	DISC, brake (RIGHT)	1	
2	90109-06757	BOLT	4	
3	56A-25810-00	CALIPER ASSY (RIGHT)	1	
4	56A-W0057-00	.PISTON ASSY, caliper	1	
5	56A-W0047-00	..CALIPER SEAL KIT	1	
6	5R2-25197-00	.BOOT	1	
7	56A-25937-00	.BOOT 2	1	
8	51L-W0048-00	.BREED SCREW KIT	1	
9	56A-25919-00	.SUPPORT, pad	1	
10	56A-25919-10	.SUPPORT, pad	1	
11	56A-W0046-00	.BRAKE PAD KIT, rear	1	
12	56A-25926-00	.BOLT	1	
13	34X-25845-00	.CAP, indicator	1	
14	95811-08040	BOLT, flange	2	



56A110-5260

D5

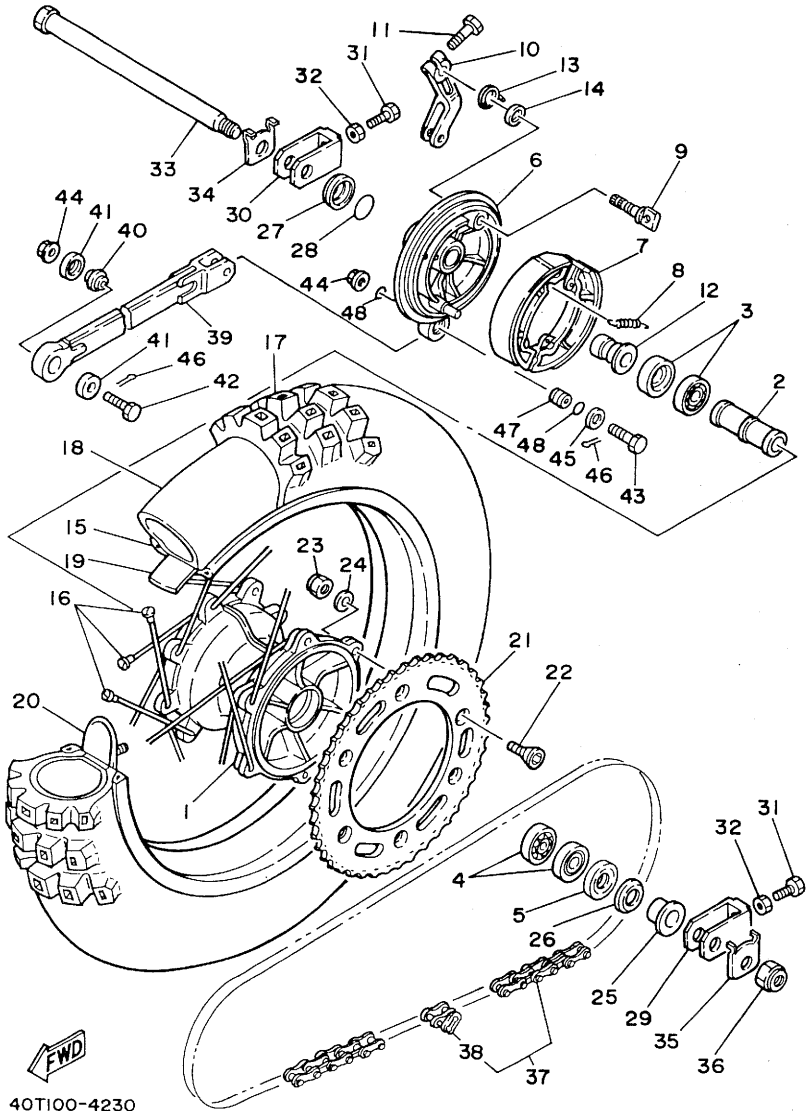
FIG. 24 REAR WHEEL



REF. NO.	PART NO.	DESCRIPTION	Q'TY	REMARKS
1	57H-25311-00-98	HUB, rear	1	low gloss black
2	90560-20226	SPACER	1	
3	93306-00430	BEARING	2	
4	93306-00406	BEARING (B6004Z)	2	
5	93106-28023	OIL SEAL	1	
6	40T-25321-00-98	PLATE, brake shoe	1	low gloss black
7	40T-25330-00	BRAKE SHOE COMP.	2	
8	90507-20002	SPRING, tension	2	
9	40T-25351-00	CAMSHAFT	1	
10	5X6-25355-00	LEVER, camshaft	1	
11	90101-06291	BOLT	1	
12	90387-200H1	COLLAR	1	
13	90508-29641	SPRING, torsion	1	
14	93109-14021	OIL SEAL	1	
15	94425-18415	RIM (2.50-18)	1	
16	57H-25304-00	SPOKE SET, rear	1	
17	94114-181F0	TIRE	1	bridgestone
18	94214-18231	TUBE	1	bridgestone
19	94340-18086	BAND, rim (4.00-18)	1	bridgestone
20	40T-25394-00	SPACER, bead	2	
21	3R4-25446-00	SPROCKET, driven (46T)	1	STD
	3R4-25444-01	SPROCKET, driven (44T)	1	AP
	3R4-25445-00	SPROCKET, driven (45T)	1	AP
	3R4-25448-00	SPROCKET, driven (48T)	1	AP
	3R4-25450-00	SPROCKET, driven (50T)	1	AP
	3R4-25452-00	SPROCKET, driven (52T)	1	AP
22	90109-08706	BOLT	6	
23	95611-08100	NUT, u	6	

FIG. 24 REAR WHEEL

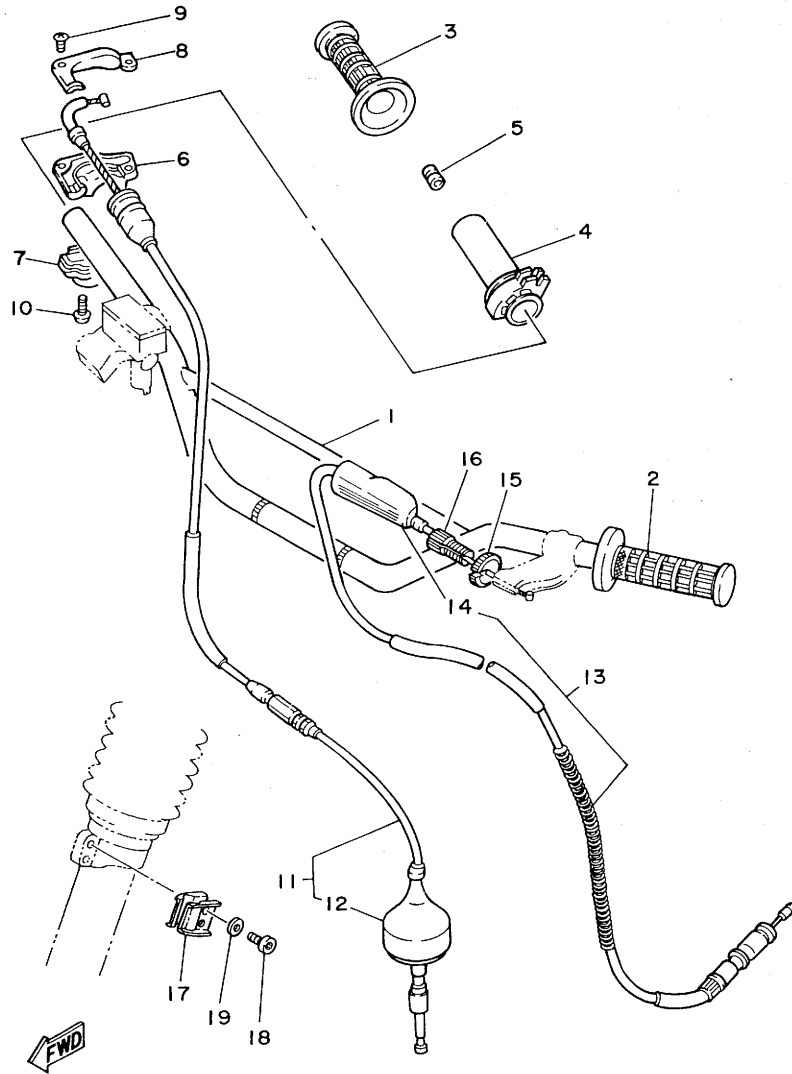
REF. NO.	PART NO.	DESCRIPTION	Q'TY	REMARKS
24	90201-081A6	WASHER, plate	6	
25	90387-200H2	COLLAR	1	
26	4V4-25367-00	COVER, hub dust	1	
27	23X-25327-00	COVER, plate	1	
28	93210-31114	O-RING	1	
29	56A-25388-00	PULLER, chain 1	1	
30	57H-25389-00	PULLER, chain 2	1	
31	90101-08475	BOLT	2	
32	95301-08700	NUT	2	
33	23X-25381-00	AXLE, wheel	1	
34	90209-21243	WASHER	1	
35	90209-18244	WASHER	1	
36	90185-18104	NUT, self-locking	1	
37	94585-20112	CHAIN, drive (DID520DS 112L)	1	
38	94685-20001	.JOINT, chain	1	
39	23X-25371-00	BAR, tension	1	
40	93399-99910	BEARING	1	
41	93112-19006	OIL SEAL	2	
42	90102-08034	BOLT, with hole	1	
43	90109-08370	BOLT	1	
44	90185-08113	NUT, self-locking	2	
45	92901-08600	WASHER, plate	1	
46	91401-20015	PIN, cotter	2	
47	90387-083F0	COLLAR	1	
48	93210-14167	O-RING	2	



40T100-4230

D7

FIG. 25 STEERING HANDLE. CABLE



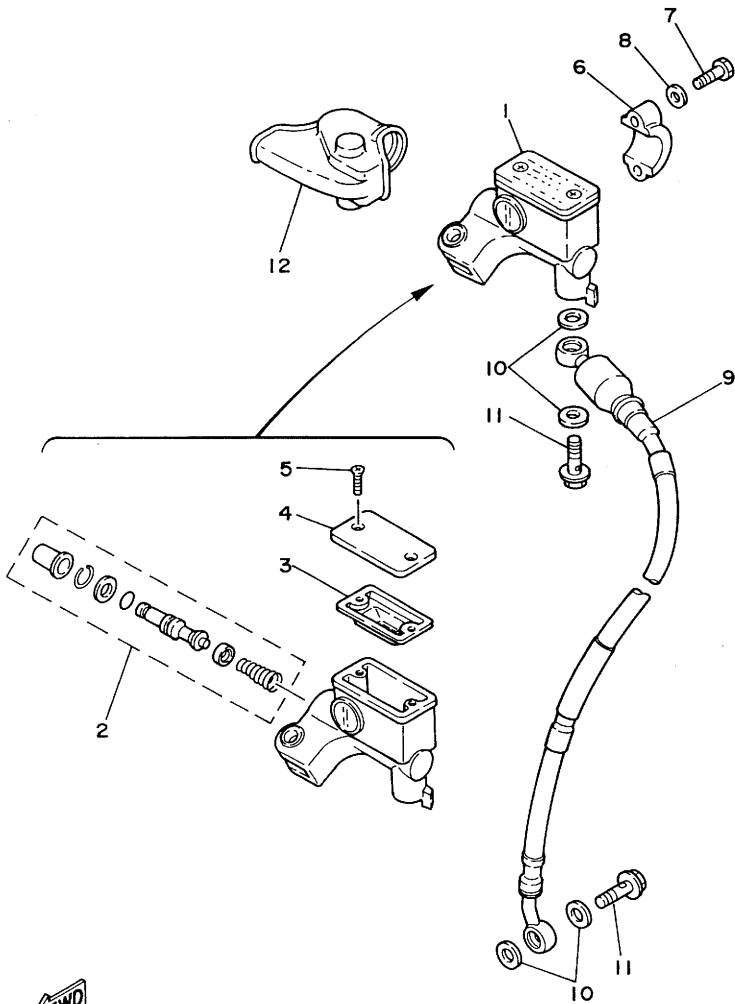
REF. NO.	PART NO.	DESCRIPTION	Q'TY	REMARKS
1	23X-26111-00	HANDLEBAR	1	
2	4V4-26241-01	GRIP (L.H)	1	
3	4V4-26242-01	GRIP (R.H)	1	
4	23X-26243-00	TUBE, throttle guide	1	
5	688-82535-00	GROMMET	1	
6	23X-26281-00	CAP, grip upper	1	
7	431-26282-01-98	CAP, grip lower	1	low gloss black
8	5X2-2628H-01	CAP, wire	1	
9	98606-04012	SCREW, oval head	2	
10	98506-05016	SCREW, pan head	2	
11	40T-26311-00	CABLE, throttle 1	1	
12	510-26329-00	.CAP, rubber	1	
13	40T-26335-00	CABLE, clutch	1	
14	382-26372-01	.COVER, handle lever 1	1	
15	90179-08401	NUT	1	
16	90123-08090	BOLT	1	
17	90465-16258	CLAMP	2	
18	91311-06016	BOLT	2	
19	90201-061A5	WASHER, plate	2	

56A110-5280

D8

FIG. 26 FRONT MASTER CYLINDER

REF. NO.	PART NO.	DESCRIPTION	Q'TY	REMARKS
1	56A-25870-00	MASTER CYLINDER SUB ASSY	1	
2	56A-W0041-00	.CYLINDER KIT, master	1	
3	56A-25854-00	.DIAPHRAGM, reservoir	1	
4	56A-25852-00	.CAP, reservoir	1	
5	98706-04012	.SCREW, flat head	2	
6	56A-25867-00	BRACKET, master cylinder	1	
7	97326-06025	BOLT	2	
8	92906-06600	WASHER, plate	2	
9	56A-25872-00	HOSE, brake 1	1	
10	90201-10118	WASHER, plate	4	
11	90401-10034	BOLT, union	2	
12	56A-26372-00	COVER, handle lever 1	1	



56A110-5290

D9

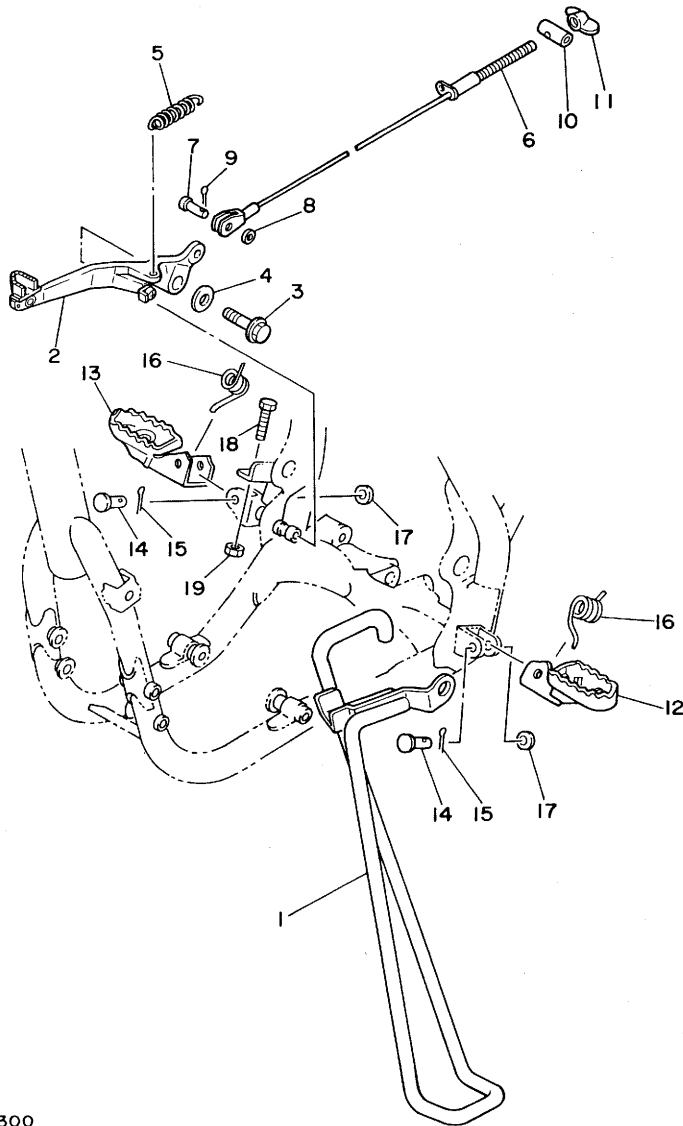


FIG. 27 STAND. FOOTREST

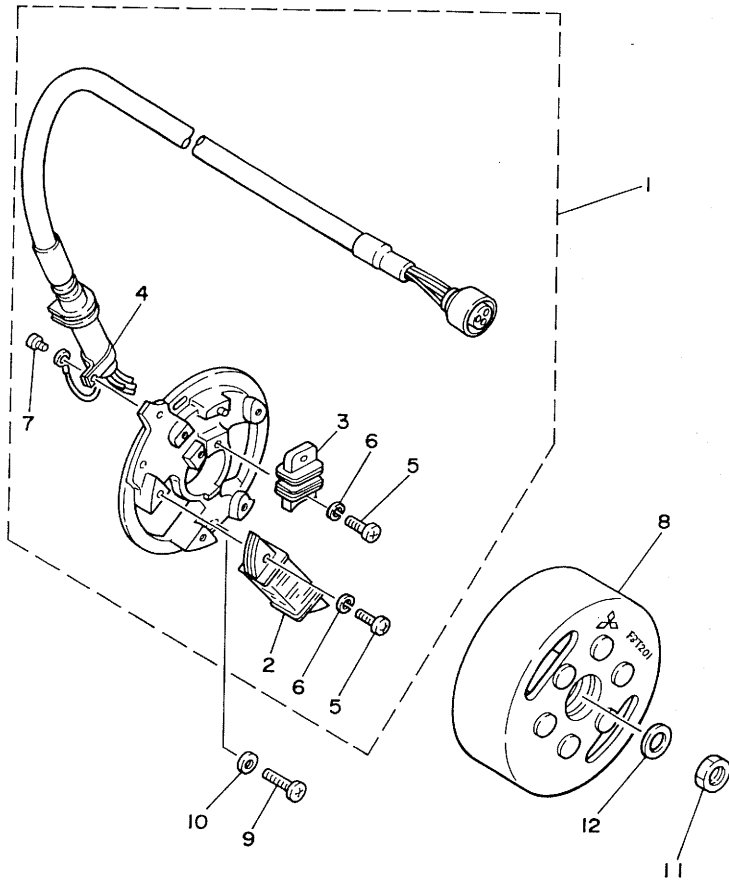
REF. NO.	PART NO.	DESCRIPTION	Q'TY	REMARKS
1	39X-27311-00	STAND, side	1	
2	56A-27200-00	PEDAL, brake	1	
3	95801-08016	BOLT, flange	1	
4	90201-08730	WASHER, plate	1	
5	90506-16372	SPRING, tension	1	
6	40T-26351-00	CABLE, brake	1	
7	91790-08021	PIN, clevis	1	
8	90201-08544	WASHER, plate	1	
9	91401-25015	PIN, cotter	1	
10	90249-12008	PIN	1	
11	90175-06016	NUT, wing	1	
12	23X-27411-01	FOOTREST 1	1	
13	23X-27421-01	FOOTREST 2	1	
14	90240-10101	PIN, clevis	2	
15	91401-25020	PIN, cotter	2	
16	90508-20583	SPRING, torsion	2	
17	90201-10119	WASHER, plate	2	
18	90101-06586	BOLT	1	
19	95301-06700	NUT	1	



56A110-5300

FIG. 28 GENERATOR

REF. NO.	PART NO.	DESCRIPTION	Q'TY	REMARKS
1	23X-85510-21	STATOR ASSY	1	
2	23X-85520-21	.COIL, charge	1	
3	23X-85580-20	.COIL, pulser	1	
4	104-81328-20	.CLAMP	1	
5	98501-04016	.SCREW, pan head	3	
6	92901-04100	.WASHER, spring	3	
7	110-81345-21	.SCREW, pan head	1	
8	23X-85550-20	ROTOR ASSY	1	
9	92501-06020	SCREW, pan head	2	
10	90201-061A5	WASHER, plate	2	
11	90170-12067	NUT	1	
12	90201-12593	WASHER, plate	1	



57H110-5280

D11

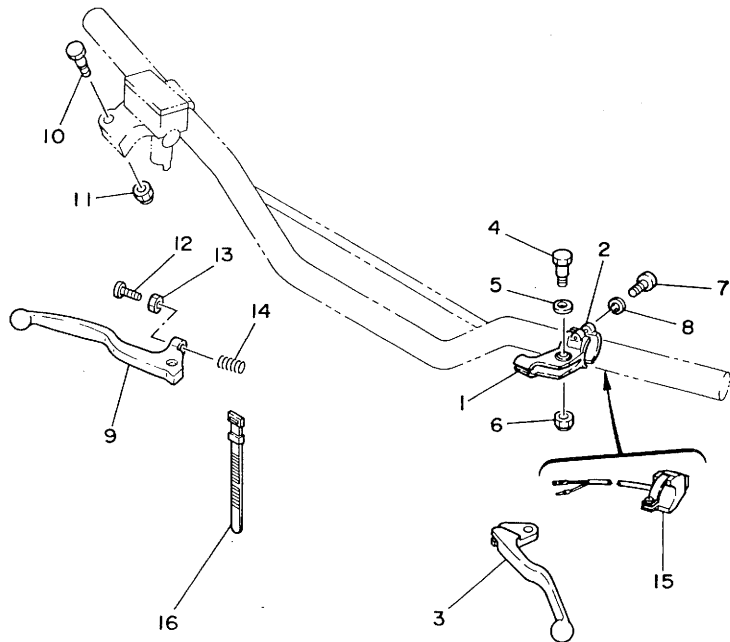


FIG. 29 HANDLE SWITCH. LEVER

REF. NO.	PART NO.	DESCRIPTION	Q'TY	REMARKS
1	38V-82911-00	HOLDER, lever 1	1	
2	38V-82913-00	HOLDER, lever lower 1	1	
3	23X-83912-00	LEVER 1	1	
4	90109-06576	BOLT	1	
5	90201-082A9	WASHER, plate	1	
6	95606-06100	NUT, u	1	
7	98506-05018	SCREW, pan head	2	
8	92906-05100	WASHER, spring	2	
9	55Y-83922-00	LEVER 2	1	
10	90109-06577	BOLT	1	
11	95606-06100	NUT, u	1	
12	90149-06153	SCREW	1	
13	90170-06010	NUT	1	
14	90501-10312	SPRING, compression	1	
15	23X-83976-00	SWITCH, handle 1	1	
16	437-83936-00	BAND, switch cord	2	

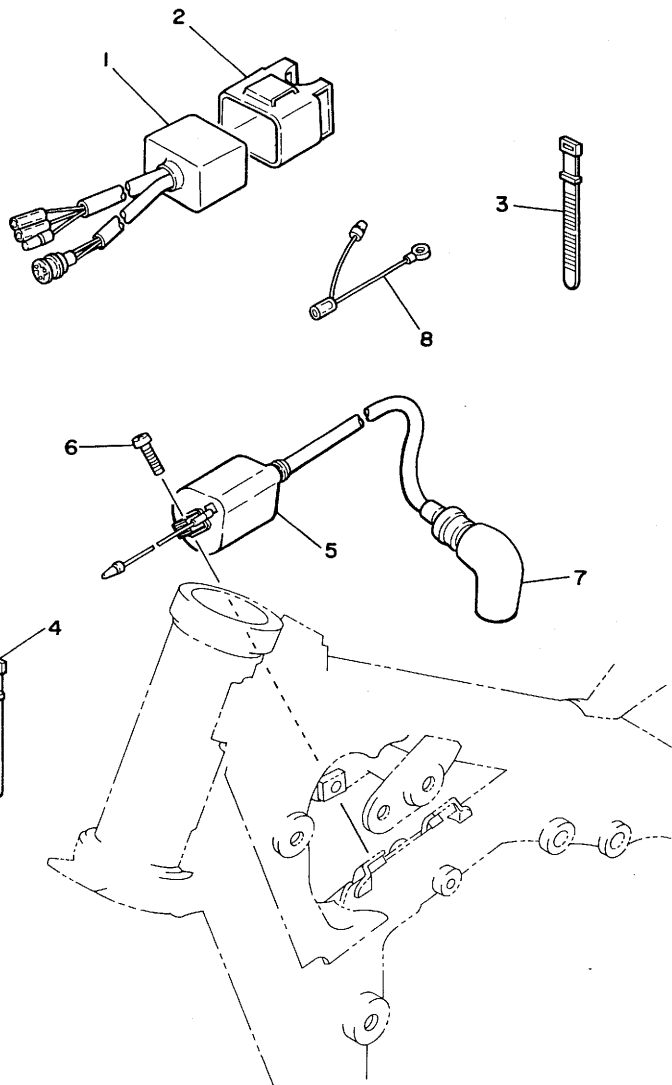


56A110-5320

D12

FIG. 30 ELECTRICAL 1

REF. NO.	PART NO.	DESCRIPTION	Q'TY	REMARKS
1	23X-85540-20	C.D.I. UNIT ASSY	1	
2	2A7-85546-00	BAND	1	
3	25G-83936-00	BAND, switch cord	1	
4	7F6-82591-00	BAND	3	
5	23X-82310-40	IGNITION COIL ASSY	1	
6	92502-06016	SCREW, pan head	2	
7	1M1-82370-21	PLUG CAP ASSY	1	UR with noise suppressor
	3R0-82370-20	PLUG CAP ASSY	1	UR
8	5X1-82519-00	WIRE, earth lead	1	



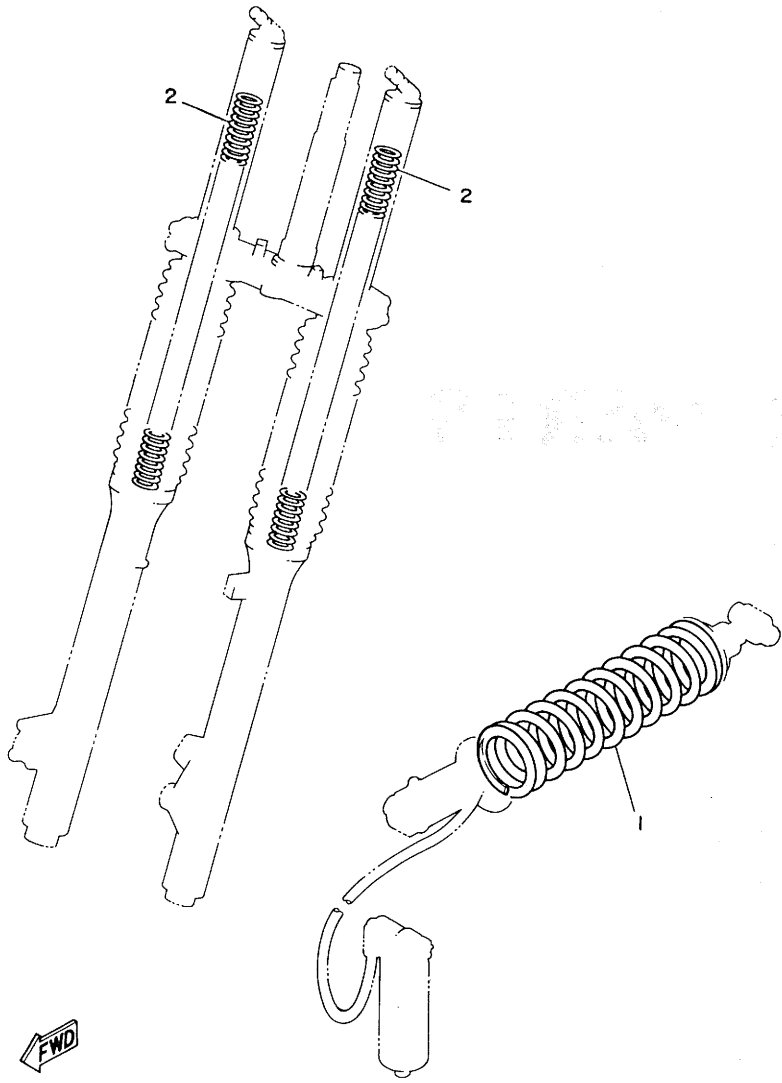
40T100-4280

D13

ALTERNATE PARTS

FIG. 31 ALTERNATE (CHASSIS)

REF. NO.	PART NO.	DESCRIPTION	Q'TY	REMARKS
1	56A-22212-10-6W	SPRING (K=4.0)	1	UR AP native red (soft)
	39X-22212-00-6W	SPRING (K=4.5)	1	UR AP native red (hard)
2	39X-23141-10	SPRING, front fork (K=0.275)	2	UR AP (soft)
	39X-23141-20	SPRING, front fork (K=0.325)	2	UR AP (hard)



39W100-4320

D14

REPAIR KIT

FIG. 32 REPAIR KIT

REF. NO.	PART NO.	DESCRIPTION	Q'TY	REMARKS
1	40T-11630-00	PISTON ASSY (STD)	1	AP
	40T-11631-00-93	.PISTON (STD)	1	
2	5X6-11601-00	.PISTON RING SET (STD)	1	
3	275-11633-00	.PIN, piston	1	
4	93450-19052	.CIRCLIP	2	
5	40T-11630-10	PISTON ASSY (1ST O/S)	1	AP
6	40T-11635-00	.PISTON (0.25MM O/S)	1	
7	5X6-11601-10	.PISTON RING SET (1ST O/S)	1	
8	275-11633-00	.PIN, piston	1	
9	93450-19052	.CIRCLIP	2	
10	40T-11630-20	PISTON ASSY (2ND O/S)	1	AP
11	40T-11636-00	.PISTON (0.50MM O/S)	1	
12	5X6-11601-20	.PISTON RING SET (2ND O/S)	1	
13	275-11633-00	.PIN, piston	1	
14	93450-19052	.CIRCLIP	2	
15	40T-11630-30	PISTON ASSY (3RD O/S)	1	AP
16	40T-11637-00	.PISTON (0.75MM O/S)	1	
17	5X6-11601-30	.PISTON RING SET (3RD O/S)	1	
18	275-11633-00	.PIN, piston	1	
19	93450-19052	.CIRCLIP	2	
20	40T-11630-40	PISTON ASSY (4TH O/S)	1	AP
21	40T-11638-00	.PISTON (1.00MM O/S)	1	
22	5X6-11601-40	.PISTON RING SET (4TH O/S)	1	
23	275-11633-00	.PIN, piston	1	
24	93450-19052	.CIRCLIP	2	
25	3R5-11650-00	CONNECTING ROD ASSY	1	AP
26	3R5-11651-00	.ROD, connecting	1	
27	3R8-11681-00	.PIN, crank 1	1	

D15

FIG. 32 REPAIR KIT

REF. NO.	PART NO.	DESCRIPTION	Q'TY	REMARKS
28	90209-25085	.WASHER	2	
29	93310-42541	.BEARING, cylindrical	1	
30	93310-418E9	.BEARING, cylindrical	1	

E2

INDEX

NUMERICAL INDEX

PART NO.	GRID NO.	PART NO.	GRID NO.	PART NO.	GRID NO.	PART NO.	GRID NO.	PART NO.	GRID NO.	PART NO.	GRID NO.
56A-W0041-00	D- 9	3R5-11651-00	B- 3	43N-14412-00	B- 4	23X-16371-00	B-12	39X-2217F-00	C- 8	39X-23141-10	D-14
56A-W0046-00	D- 5		D-15	39X-14451-00	B- 4	38W-16380-00	B-12	22W-22178-01	C- 3	39X-23141-20	D-14
56A-W0047-00	D- 5	3R8-11681-00	B- 3	39X-14452-00	B- 5	5X6-17121-01	B-13	5X3-2218A-00	C- 8	4V4-23142-L0	C-12
51L-W0048-00	D- 5		D-15	40T-14453-00	B- 4	5X6-17131-00	B-13	4V4-22184-00	C- 3		C-13
56A-W0057-00	D- 5	137-13115-00	B- 9	39K-14457-00	B- 4	5X6-17141-00	B-13	23X-22199-10	C- 7	23X-23144-L0	C-12
39X-W1441-00	B- 4	40T-13565-00	B- 4	39X-14457-00	B- 4	256-17154-00-10	B-13	56A-22210-10-6W	C- 9		C-13
3R5-W1511-00	B- 9	26A-13575-00	B- 4	39X-14458-00	B- 4		B-13	23X-22211-00	C-10	23X-23145-L0	C-12
39X-W2473-10	D- 3	40T-13581-00	B- 4	56A-14459-00	B- 4	5X6-17211-00	B-13	39X-22212-00-6W	D-14		C-13
40T-11111-00	B- 2	40T-13584-00	B- 4	39X-14462-00	B- 4	5X6-17221-00	B-13	39X-22212-10-6W	C- 9	4V4-23146-L0	C-12
40T-11181-00	B- 2	39X-13610-00	B- 4	56A-14468-00	B- 4	5X6-17231-00	B-13	56A-22212-10-6W	D-14		C-13
40T-11311-01	B- 2	39X-13613-00	B- 4	40T-14610-00	B- 8	5X6-17241-00	B-13	23X-22213-00	C- 9	3J2-23147-00	C-12
40T-11351-00	B- 2	39X-13616-00	B- 4	40T-14613-00	B- 8	5X6-17411-01	B-13	23X-22214-00	C- 9		C-13
40T-11400-00	B- 3	39X-13621-00	B- 4	40T-14619-00	B- 2	5X6-17421-00	B-13	3R4-22221-01	C- 9	55Y-23152-M0	C-12
40T-11412-00	B- 3	57H-1410A-00	B- 7	40T-1469A-00	B- 8	23X-17461-30	B-13	23X-22223-00	C- 9		C-13
40T-11422-00	B- 3	57H-14101-00	B- 6	39X-14747-00	B- 8	23X-17461-40	B-13	3R4-22228-00	C- 9	4V4-23153-L0	C-12
5X6-11601-00	B- 3	40T-14103-00	B- 7	40T-14753-01	B- 8	23X-17461-50	B-14	56A-22261-00	C-10		C-12
	D-15	23X-14104-00	B- 7	40T-14771-00	B- 8	23X-18101-00	C- 2	24X-22262-00	C-10	4V4-23157-L0	C-12
5X6-11601-10	B- 3	40T-14106-00	B- 6	565-14771-00	B- 8	23X-18110-00	C- 2	56A-22401-00	C- 9		C-13
	D-15	23X-14107-35	B- 6	40T-1490J-00	B- 6	3R4-18140-00	B-15	39X-22409-00	C- 9	23X-23158-L0	C-12
5X6-11601-20	B- 3	40T-14112-25	B- 6	3R4-15113-00	B- 9	1W1-18177-00	B-15	56A-22463-00	C- 9		C-13
	D-15	40T-14112-30	B- 6	4V4-15118-00	B- 9	5X6-18512-00	B-15	26A-22472-00	C- 9	56A-2316A-M0	C-12
5X6-11601-30	B- 3	40T-14112-35	B- 6	3R5-15121-05	B- 9	5X6-18513-00	B-15	23X-22475-00	C- 9		C-13
	D-15	40T-14115-00	B- 6	168-15362-00	B-10	5X5-18531-01	B-15	56A-22489-00	C- 9	56A-23170-M0	C-12
5X6-11601-40	B- 3	278-14117-00	B- 6	56A-15378-00	B-10	5X5-18535-01	B-15	39X-22493-00	C- 9		C-13
	D-15	8H0-14131-00	B- 7	23X-15381-00	B- 9	23X-18540-00	B-15	5X3-22497-00	C- 9	4V4-23171-L0	C-12
40T-11630-00	D-15	8A7-14141-00	B- 6	56A-15383-00	B- 9	57H-21110-00-FH	C- 3	56A-22499-10	C- 9		C-13
40T-11630-10	D-15	8A7-14141-56	B- 6	40T-15411-00	B-10	40T-2141K-00	C- 3	56A-23102-M0	C-12	23X-23173-L0	C-12
40T-11630-20	D-15	8A7-14141-58	B- 6	23X-15421-00	B-10	40T-2141L-00	C- 3	56A-23103-M0	C-12		C-13
40T-11630-30	D-15	193-14142-35	B- 6	40T-15431-00	B-10	40T-21415-00	C- 3	56A-23110-M0	C-12	5X6-23181-L0	C-13
40T-11630-40	D-15	193-14142-40	B- 6	4V4-15451-00	B-10	40T-21416-00	C- 3			4V4-23188-L0	C-12
40T-11631-00-93	B- 3	193-14142-45	B- 6	3R4-15462-00	B-10	40T-21425-00	C- 3		C-13		C-13
	D-15	137-14143-84	B- 6	23X-15618-00	B-11	40T-21426-00	C- 3			34K-2319U-00	C-11
40T-11631-00-94	B- 3	137-14143-86	B- 6	40T-15620-01	B-11	5X6-21511-10	C- 5	43M-23111-L0	C-12	23X-23190-L0	C-12
275-11633-00	B- 3	137-14143-88	B- 6	23X-15621-01	B-11	3R4-21611-10	C- 5		C-13		C-13
	D-15	137-14143-90	B- 6	23X-15641-00	B-11	39X-21620-00	C- 5	5X6-23118-10	C-12	43M-23191-L0	C-13
	D-15	137-14143-92	B- 6	23X-15651-00	B-11	39X-21642-00	C- 5		C-13	43M-23192-L0	C-13
	D-15	313-14146-00	B- 7	57H-15661-00	B-11	39X-21711-10-98	C- 6	4H7-23119-00	C-12	39X-23340-00	C-13
	D-15	40T-14146-00	B- 6	40T-15664-00	B-11	39X-21721-10-98	C- 6		C-13	3R4-23389-00	C-11
	D-15	3R3-14153-00	B- 6	23X-16111-00	B-12	40T-21737-10	B- 5	55Y-2312G-M0	C-12	5X6-23395-10	C-11
40T-11635-00	B- 3	40T-14158-00	B- 7	39X-16150-00	B-12		C- 6		C-13	1W1-23416-00	C-11
	D-15	57H-14175-00	B- 7	2K7-16154-00	B-12	56A-22110-00	C- 7	4V4-23125-L0	C-12	40T-23435-00-98	C-11
40T-11636-00	B- 3	363-14184-00	B- 6		B-12	307-22123-00	C-11		C-13	1E6-23441-00	C-11
	D-15	214-14185-00	B- 6	2K7-16181-00	B-12	156-22127-00	C- 7	56A-23126-L0	C-12	1E6-23442-00	C-11
40T-11637-00	B- 3	537-14186-00	B- 6	5X5-16321-00	B-12	23X-22129-00	C- 8	122-23129-00	C-12	5X6-23485-11	C-11
	D-15	40T-14187-00	B- 6	4H7-16325-00	B-12	3R4-22129-00	C- 7		C-13	43M-23489-L0	C-13
40T-11638-00	B- 3	2K7-14197-00	B- 7	23X-16351-00	B-12	5X6-22141-01	C- 7	56A-23136-L0	C-12	40T-24110-10	C-15
	D-15	310-14197-00	B- 7	23X-16356-00	B-12	39W-22151-00	C- 7	39X-23141-00	C-12	40T-2412F-00	D- 2
3R5-11650-00	D-15	4V3-1441K-00	B- 4	3R5-16357-01	B-12	39X-2217A-00	C- 7		C-13	24X-24144-00	C-15
										5X6-2415F-01	C-15
										3R3-24173-00	C-15

NUMERICAL INDEX

PART NO.	GRID NO.	PART NO.	GRID NO.	PART NO.	GRID NO.	PART NO.	GRID NO.	PART NO.	GRID NO.	PART NO.	GRID NO.
22W-24181-00	C- 6	56A-25919-00	D- 5	90101-06586	D-10	90185-10120	C-10	90201-186H3	B-12	90445-11356	C-15
39X-24181-00	C-15	56A-25919-10	D- 5	90101-08475	D- 7	90185-12119	C- 7	90201-20276	B-13	90460-56257	B- 4
23X-24184-00	C-15	56A-25926-00	D- 5	90102-08034	D- 7	90185-16127	C- 7	90201-20278	B-13	90460-74254	B- 4
57H-24250-10	D- 2	56A-25937-00	D- 5	90109-06551	B- 8	90185-18104	D- 7	90201-203E7	B-13	90465-06247	B-10
2K5-24500-00	C-15	23X-26111-00	D- 8	90109-06576	D-12	90185-18126	B-12	90201-20358	B-11	90465-16258	D- 8
1A0-24512-00	C-15	4V4-26241-01	D- 8	90109-06577	D-12	90201-06067	C- 7	90201-25290	B-13	90467-10008	C-15
214-24512-00	C-15	4V4-26242-01	D- 8	90109-06757	D- 5	90201-06069	C-15	90202-06010	C-15	90467-23059	B- 4
619-24535-00	C-15	23X-26243-00	D- 8	90109-08370	D- 7	90201-061A5	B- 5	90202-08022	C- 3	90468-26048	B-11
5X7-24611-01	C-15	5X2-2628H-01	D- 8	90109-08397	C-14		B- 8	90202-14077	C-11	90480-18354	C-15
5X7-24612-00	C-15	23X-26281-00	D- 8	90109-08512	B- 8		C-15	90206-14067	C- 9	90480-25381	C-10
509-24724-00	D- 3	431-26282-01-98	D- 8	90109-08705	C- 3		C-15	90209-18244	D- 7	90501-10312	D-12
23X-24731-10	D- 3	40T-26311-00	D- 8	90109-08706	D- 6		D- 2	90209-21243	D- 7	90501-13720	B-11
39W-24738-00	D- 3	510-26329-00	D- 8	90109-10700	C-10		D- 3	90209-25085	B- 3	90501-24408	B-12
22W-24741-00	D- 3	40T-26335-00	D- 8	90109-10702	C- 8		D- 8		E- 2	90504-03033	B- 4
5X6-24748-10	D- 3	40T-26351-00	D-10	90109-10703	C- 8		D-11	90215-20212	B-12	90506-16372	D-10
56A-25104-00	D- 4	382-26372-01	D- 8	90109-10704	C- 9	90201-06571	C- 5	90215-21239	B-14	90507-20002	D- 6
56A-25111-00-98	D- 4	56A-26372-00	D- 9	90109-12701	C- 7		C- 5	90240-10101	D-10	90507-20030	B- 8
322-25118-00	D- 4	23X-26393-00	B- 9	90116-08394	B- 2		C- 6	90249-12008	D-10	90508-14423	B-12
3R4-25181-01	D- 4	56A-27200-00	D-10	90116-12315	B- 2		C- 6	90267-40115	B- 8	90508-20583	D-10
4V5-25194-00	D- 4	39X-27311-00	D-10	90116-12316	B- 2		C-11	90280-03017	B- 3	90508-26421	B-15
5R2-25197-00	D- 5	23X-27411-01	D-10	90119-06042	C- 5	90201-081A6	D- 7	90282-07019	B-12	90508-29361	C- 2
57H-25304-00	D- 6	23X-27421-01	D-10	90119-06056	B- 5	90201-082A9	D-12	90338-07011	B- 9	90508-29641	D- 6
57H-25311-00-98	D- 6	23X-28100-01	C- 3	90123-08090	D- 8	90201-08544	C-14	90339-13005	C- 3	90508-30422	B-11
40T-25321-00-98	D- 6	2X4-2811A-00	C- 4	90149-06011	C-15		D-10	90340-12095	B- 9	90560-12171	C- 2
23X-25327-00	D- 7	23X-28135-00	C- 4	90149-06153	D-12	90201-08612	B- 8	90380-16077	C- 7	90560-15227	D- 4
40T-25330-00	D- 6	104-81328-20	D-11	90149-06179	B-12	90201-08649	B- 2	90380-22111	C- 7	90560-20226	D- 6
40T-25351-00	D- 6	110-81345-21	D-11	90152-06010	B-11	90201-087F0	D- 3	90387-06387	C-15	91311-06016	D- 8
5X6-25355-00	D- 6	23X-82310-40	D-13	90159-06016	B-12	90201-08730	B- 8	90387-06681	C- 5	91316-06020	B- 4
4V4-25367-00	D- 7	1M1-82370-21	D-13	90170-06010	D-12		D-10	90387-081A3	B- 8	91316-06025	B-10
23X-25371-00	D- 7	3R0-82370-20	D-13	90170-12067	D-11	90201-08753	C- 3	90387-083F0	D- 7	91316-06045	B- 9
23X-25381-00	D- 7	5X1-82519-00	D-13	90170-20213	C- 9	90201-100E9	C- 8	90387-121E8	C-11	91316-06050	B- 9
56A-25388-00	D- 7	688-82535-00	D- 8	90170-20255	B-12		C-10	90387-121H1	C- 8	91316-06060	B- 9
57H-25389-00	D- 7	7F6-82591-00	D-13	90175-06016	D-10	90201-10118	D- 9	90387-126H8	C-10	91316-06075	B- 9
40T-25394-00	D- 6	38V-82911-00	D-12	90179-08401	D- 8	90201-10119	D-10	90387-127G8	C-10	91401-20015	D- 7
3R4-25444-01	D- 6	38V-82913-00	D-12	90179-10280	C- 3	90201-10139	C- 3	90387-147G6	C- 7	91401-25015	D-10
3R4-25445-00	D- 6	23X-83912-00	D-12	90179-12244	B-11	90201-10141	C-11	90387-147G7	C- 7	91401-25020	D-10
3R4-25446-00	D- 6	55Y-83922-00	D-12	90179-20255	B-14	90201-10430	C- 8	90387-15535	D- 4	91402-20018	C-11
3R4-25448-00	D- 6	25G-83936-00	D-13	90179-22330	C-11		C-10	90387-157L9	D- 4	91790-08021	D-10
3R4-25450-00	D- 6	437-83936-00	C- 5	90179-25033	C-11	90201-120A5	C- 7	90387-160H4	B- 9	91810-05016	B- 9
3R4-25452-00	D- 6		D-12	90185-08106	C- 3	90201-120E6	C- 8		B- 9	91810-17016	B- 2
56A-25810-00	D- 5	23X-83976-00	D-12		C- 7		C-10	90387-200H1	D- 6	92501-06010	B- 9
56A-25831-00	D- 5	23X-85510-21	D-11	90185-08113	C- 3	90201-123E8	C-11	90387-200H2	D- 7		C-15
34X-25845-00	D- 5	23X-85520-21	D-11		C- 3	90201-12593	D-11	90387-25663	B-13	92501-06012	B- 5
56A-25852-00	D- 9	23X-85540-20	D-13		C- 3	90201-13202	C- 3	90401-10034	D- 9		B- 9
56A-25854-00	D- 9	2A7-85546-00	D-13		D- 7	90201-14222	C- 7	90430-06016	B-10		B- 9
56A-25867-00	D- 9	23X-85550-20	D-11	90185-10037	C-11	90201-160F6	C- 7	90430-12038	B- 9		D- 2
56A-25870-00	D- 9	23X-85580-20	D-11	90185-10120	C- 8	90201-17327	B-12	90445-08605	B- 9		D- 3
56A-25872-00	D- 9	90101-06291	D- 6		C-10	90201-17545	B-11	90445-09300	C-15	92501-06014	C- 6

NUMERICAL INDEX

PART NO.	GRID NO.	PART NO.	GRID NO.	PART NO.	GRID NO.	PART NO.	GRID NO.	PART NO.	GRID NO.	PART NO.	GRID NO.
92501-06014	C- 6	93112-19006	D- 7	93606-14154	B-15	97321-06030	C-15				
	C-11	93210-14104	B-10	93608-25150	C- 2	97326-06025	D- 9				
92501-06020	D-11	93210-14167	D- 7	93700-06004	C- 7	98501-04006	C- 9				
92502-06016	D-13	93210-19501	B-11		C- 8	98501-04016	D-11				
92506-06008	B-10	93210-31114	D- 7	93700-06005	C- 8	98501-05016	B- 6				
92506-06012	B- 9	93300-20501	B-13	94110-210F9	D- 4	98503-03006	B- 4				
92506-06025	B-10		B-13	94114-181F0	D- 6	98506-04018	C-13				
92506-06035	B-10	93306-00406	D- 6	94209-21229	D- 4	98506-05016	D- 8				
92701-06012	B- 9	93306-00430	D- 6	94214-18231	D- 6	98506-05018	D-12				
92901-04100	D-11	93306-20107	B-15	94330-21084	D- 4	98606-04012	D- 8				
92901-05100	B- 6	93306-20205	D- 4	94340-18086	D- 6	98706-04012	D- 9				
92901-05200	B- 4	93306-30615	B- 3	94416-21412	D- 4	98902-06018	C-15				
92901-06100	B- 5		B- 3	94425-18415	D- 6						
	B- 5	93310-418E9	B- 3	94585-20112	D- 7						
	B- 8		E- 2	94685-20001	D- 7						
	B-12	93310-42541	B- 3	95301-06600	B-12						
	C- 6		E- 2	95301-06700	D-10						
	C- 6	93311-62035	B-13	95301-08600	B- 2						
	C-15		B-13	95301-08700	D- 7						
	C-15	93315-21721	B-12	95311-08600	C-14						
92901-06200	B- 5	93315-31732	C- 8								
92901-08100	B- 8	93317-32034	C- 7	95601-05100	B- 4						
	C-14	93317-32231	C- 7	95606-06100	D-12						
	D- 3	93332-00008	C-11		D-12						
92901-08600	D- 7	93332-00023	C-11	95611-08100	D- 6						
92901-10200	C- 3	93342-22208	C- 7	95611-10100	C- 8						
92902-06700	C- 5	93399-99910	D- 7	95701-12100	B- 2						
	C- 5	93399-99916	C- 9	95801-06012	D- 3						
92902-08200	C- 6		C- 9	95801-06020	C- 7						
92903-03100	B- 4	93410-17008	B-11	95801-08016	D-10						
92906-05100	D-12	93410-20038	B-13	95802-08012	C- 3						
92906-06100	B-10		B-13	95802-08055	C- 7						
92906-06600	B-10	93410-30012	B-13	95811-08040	D- 5						
	B-10	93440-25084	B-13	95811-08055	C- 3						
	D- 9		B-13	95811-08110	C- 3						
93102-12106	C- 2	93440-30113	C- 9	95811-08180	C- 3						
93102-17263	B-12		C- 9	95811-10065	C- 3						
93102-20309	B-11	93440-51103	C- 9	95821-08035	C-11						
93102-32M07	B-13	93450-19052	B- 3	95821-08040	C-11						
93103-30092	B- 3		D-15	95821-08060	C- 3						
93103-40091	B- 3		D-15	97301-06012	B- 5						
93104-18077	C- 9		D-15	97301-06016	B- 8						
93106-20021	D- 4		D-15		C- 5						
93106-22019	C- 7		D-15		C-15						
93106-28023	D- 6	93501-04011	B-11	97301-08016	B- 8						
93108-35004	C- 7	93515-32029	B-12		D- 3						
93109-14021	D- 6	93604-21193	C- 9	97302-06020	C- 5						
93109-20029	C- 7	93604-26132	C- 9	97321-06025	C- 2						